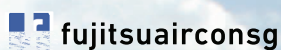


AIRSTAGE

PRODUCT CATALOGUE
AIR CONDITIONERS



Fujitsu General provides online control

(Adopting Wireless LAN Interface)

By using our Wireless LAN Interface and FGLair app, you can control your home's cooling and heating anytime and anywhere.



Wireless LAN Interface

The exclusive Wi-Fi adaptor enables to operate the air conditioner by smartphone or tablet PC from outside.



Download Free

User friendly app

User friendly screen display facilitates easy operation.

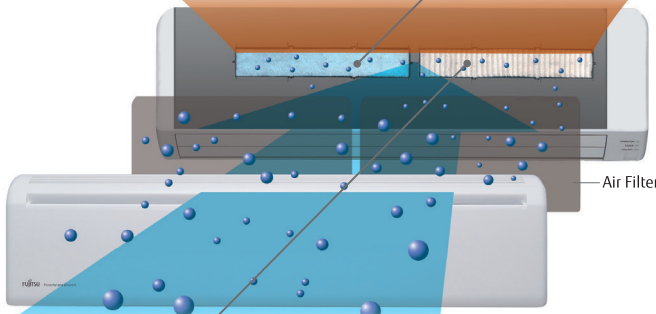


Different filters are used on each side



Apple-catechin Filter

The Apple-catechin filter uses static electricity to clean fine particles and dust in the air.



Air Filter



Ion Deodorization Filter

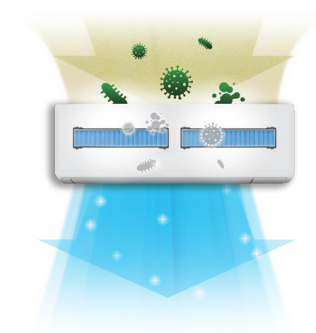
The filter deodorizes by powerfully decomposing absorbed odors using the oxidizing and reducing effects of ions generated by the ultra-fine-particle ceramic.



PM2.5 + Anti-Virus Filter

The filter inhibits the activities of viruses*1, bacteria*2 and molds*3 trapped on the filter with dust or droplet) (only effective when the microorganism is trapped on the filter with dust or droplet)

Clean the firmly catch the PM2.5 particles of 0.3~2.5µm. (PM2.5 is a general term for micro particulate matter less than 2.5µm.)



Wall Mounted type



Model: ASAG09CM / ASAG12CM / ASAG18CM / ASAG24CM / ASAG30CM



ASAG09/12CM



ASAG18CM



ASAG24/30CM



(09/12)



(18)



(24/30)

Wireless R.C.



AOAG09/12CM



AOAG18/24CM



AOAG30CM

Specifications

Model No.	Indoor Unit		ASAG09CM	ASAG12CM	ASAG18CM	ASAG24CM	ASAG30CM	
	Outdoor Unit		AOAG09CM	AOAG12CM	AOAG18CM	AOAG24CM	AOAG30CM	
Power Source	V/Ø/Hz		230/1/50					
Capacity	Cooling	BTU/h	9,500 (3,070-14,300)	11,900 (3,070-15,500)	17,400 (5,500-23,100)	20,400 (6,000-26,600)	24,200 (9,700-31,500)	
		kW	2.79 (0.90-4.19)	3.50 (0.90-4.54)	5.10 (1.61-6.77)	5.99 (1.76-7.79)	7.10 (2.84-9.23)	
Input Power	Cooling	kW	0.54	0.72	1.12	1.34	1.65	
EER	Cooling	W/W	5.17	4.86	4.55	4.47	4.3	
Running Current	Cooling	A	3.0	3.7	5.2	6.1	7.6	
Moisture Removal		l/h	0.48	0.77	1.26	0.88	1.37	
Sound Pressure (Cooling)	Indoor (H/M/L/Q)	dB(A)	39/35/30/20		43/35/30/20		47/42/36/30	
	Outdoor		46		48		54	
Airflow Rate (Cooling)	Indoor (H/M/L/Q)	m ³ /h	670/560/430/250		760/560/430/250		1010/850/630/500	
	Outdoor		2,000		2,210		3,040	
Net Dimensions H x W x D	Indoor / Grille	mm	270 × 834 × 222		270 × 834 × 222		280 × 980 × 240	
		kg(lbs)	10(22)		10(22)		12.5(28)	
Net Weight	Outdoor	mm	632 × 799 × 290		632 × 799 × 290		716 × 820 × 315	
		kg(lbs)	35(77)		35(77)		41(90)	
Piping Connections (Small / Large)		mm	6.35/9.52		6.35/9.52		6.35/12.70	
Drain Pipe Diameter (I.D./O.D.)		mm	13.8 / 15.8 to 16.7		13.8 / 15.8 to 16.7		13.8 / 15 to 16.8	
Max. Pipe Length (Pre-Charge)		m	20 (15)		20 (15)		30 (15)	
Max. Height Difference		m	15		15		25	
Operation Range	Cooling	°CDB	18 to 46		18 to 46		18 to 46	
Refrigerant			R32		R32		R32	

Note : Specifications are based on the following conditions.

Cooling : Indoor temperature of 27°CDB / 19°CWB, and outdoor temperature of 35°CDB / 24°CWB.

Optional Parts

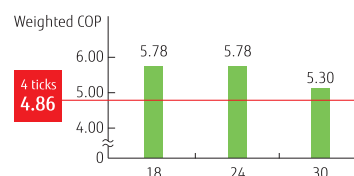
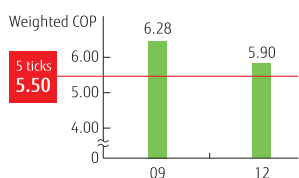
Compact Wired Remote Controller : UTY-RCRYZ1
 Wired Remote Controller (Touch Panel) : UTY-RNRYZ5
 Wired Remote Controller : UTY-RLRY

Simple Remote Controller : UTY-RSRY, UTY-RHRY
 External Input and Output PCB : UTY-XCSXZ2
 External Connect Kit : UTY-XWZXZ5

Communication Kit : UTY-TWRXZ2
 Wireless LAN Interface (USB Type) : UTY-TFSXF3

High Energy Saving

New Models have achieved the top energy efficiency Level (5 ticks) by Inverter technology.



Cassette

Model: AUAH24CR / AUAH36CR



AOAH24CB



AOAH36CB

Specifications

Model No.	Indoor Unit		AUAH24CR		AUAH36CR	
	Outdoor Unit		AOAH24CB		AOAH36CB	
Power Source		V/Ø/Hz	230 / 1 / 50			
Capacity	Cooling (Min.-Max.)	kW	7.10 (3.34 - 10.65)		10.0 (3.80 - 15.00)	
		Btu/h	24,200 (11,400 - 36,300)		34,100 (13,000 - 51,200)	
Input Power	Cooling	kW	1.46		2.05	
EER	Cooling		4.86		4.88	
COP (Weighted)	Cooling	W/W	6.04		6.00	
Running Current	Cooling	A	6.6		9.2	
Moisture Removal		l/h	1.2		2.4	
Sound Pressure (Cooling)	Indoor (H/M/L/Q)	dB(A)	41/38/36/33		46/42/39/36	
	Outdoor		53		52	
Airflow Rate (Cooling)	Indoor (H/M/L/Q)	m³/h	1560/1390/1300/1150		2000/1650/1460/1300	
	Outdoor		3,380		6,400	
Net Dimensions H x W x D	Indoor / Grille	mm	288 x 840 x 840 / 53 x 950 x 950		288 x 840 x 840 / 53 x 950 x 950	
		kg (lbs)	29 (64) / 6 (13)		29 (64) / 6 (13)	
Net Weight	Outdoor	mm	788 x 940 x 320		1,418 x 970 x 370	
		kg (lbs)	53 (117)		94 (207)	
Piping Connections (Small / Large)			9.52 / 15.88		9.52 / 15.88	
Drain Pipe Diameter (I.D./O.D.)		mm	Ø25 / Ø32		Ø25 / Ø32	
Max. Pipe Length (Pre-Charge)		m	50 (30)		55 (30)	
Max. Height Difference			30		30	
Operation Range	Cooling	°CDB	21 to 46		21 to 46	
Refrigerant			R32		R32	
Cassette Grille			UTG-UKYC-W		UTG-UKYC-W	

Note : Specifications are based on the following conditions.

Cooling : Indoor temperature of 27°CDB / 19°CWB, and outdoor temperature of 35°CDB / 24°CWB.

Optional Parts

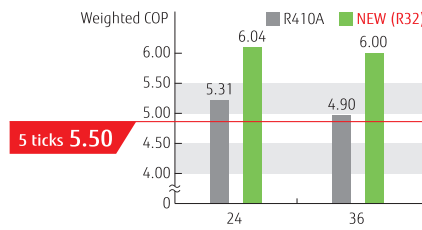
Compact Wired Remote Controller: UTY-RCRYZ1
 Wired Remote Controller (Touch Panel): UTY-RNRYZ5
 Wired Remote Controller UTY-RLRY
 Simple Remote Controller UTY-RSRY
 UTY-RHRY
 Cassette Grille: UTY-UKYC-W
 UTY-UKYA-B

Human Sensor Kit: UTY-SHZXC
 Air Outlet Shutter Plate: UTR-YDZK
 Wide Panel UTY-AKXA-W
 Panel Spacer: UTY-BKXA-W
 Insulation Kit for High Humidity: UTY-KXRA
 Fresh-Air Intake Kit: UTY-VXRA
 IR Receiver Kit: UTY-LBTYC

External Input and Output PCB: UTY-XCSX
 External Input and Output PCB Box: UTY-GXRA
 Wireless LAN Interface: UTY-TFSXZ2
 Modbus Converter: UTY-VMSX
 KNX Converter: UTY-VKSX
 External Switch Controller: UTY-TERX
 External Connect Kit: UTY-XWZXZG

High Energy Saving

New Models have achieved the top energy efficiency Level (5 ticks) by Inverter technology.



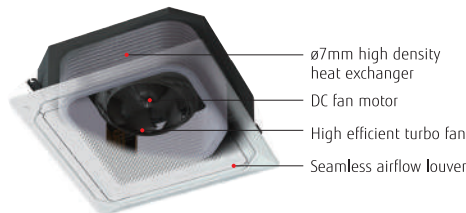
AUAH24CR



AUAH36CR

Uniform Air Distribution by the seamless Air Opening

In new model, the gaps between each airflow openings are removed, which enables to distribute wider and uniform airflow to room.



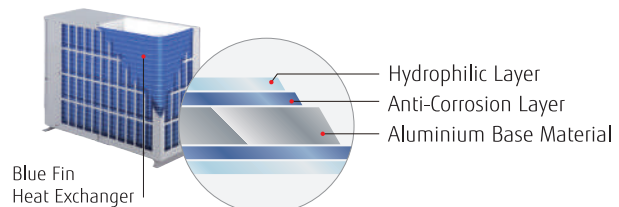
Uniform Temperature Air Conditioning

Achieve a comfortable air conditioning spread to every corner of the room by circular flow & wide vertical airflow.



Blue Fin Heat Exchanger

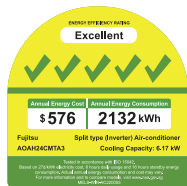
Blue Fin Heat-Exchanger is used for the outdoor units, which enables to enhance the corrosion-resistance performance.



Multi Split

3 unit Multi: AOA24CBTA3

4 unit Multi: AOA30CBTA4



Weighted COP

6.22



Weighted COP

5.85

Specifications(3-unit, 4-unit)

Model No.			AOA24CBTA3	AOA30CBTA4
Power Source		V/Ø/Hz	230/1/50	230/1/50
Rated Capacity (min-max)	Cooling	kW	6.0 (1.8-9.0)	7.5 (2.4-11.0)
Sound pressure level	Cooling	dB(A)	53	53
Net Dimensions H x W x D		mm	716 x 820 x 315	884 x 820 x 315
Net Weight		kg(lbs)	48 (106)	58 (128)
Connection Pipe Diameter	Small (Liquid)	mm	6.35 x 3	6.35 x 4
	Large (Gas)			
Max. Pipe Length	Total / Each	m	50 / 25	70 / 25
	Between Outdoor Unit and Each Indoor Units.			
Max. Height Difference	Between Indoor Units.	m	15	15
	Between Outdoor Unit and Each Indoor Units.			
Operation Range	Cooling	°CDB	10 to 46	10 to 46
	Heating			
Refrigerant	Type	kg	R32	R32
	Charge			

Note : Specifications are based on the following conditions.

Cooling : Indoor temperature of 27°CDB / 19°CWB, and outdoor temperature of 35°CDB / 24°CWB.

Pipe length : 5m Height difference : 0m (Outdoor unit - Indoor unit)

Wall-Mounted Type

Designer Series

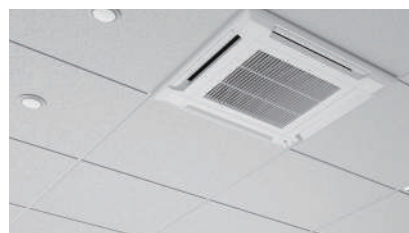
The exterior design harmonizes beautifully with any decor and adds comfortable elegance to the room. The light, elegant and three-dimensional expression achieved by the curved surface looks beautiful from any angle.



CMF: Color Material Finish

The texture of the front panel expresses the craftsmanship of Europe, and changes its expression with the changing light of the day.

Different Cassette Type Designs



Compatible with grid ceiling systems
Compact cassette Series
for grid ceiling



Beautiful design from any angle
Cassette type Circular flow Series
White Panel



Sole Agent:



Winfinity (S'pore) Pte Ltd

19 Greenwich Drive, #03-00 Kerry Logistics Centre-Tampines, Singapore 534021
Tel: 6844 2220 Fax: 6844 2221 www.winfinity.com.sg

Updated in Feb 2023

Multi Split Indoor Unit Specifications

Compact Wall Mounted (Designer Series)



Model No.	Indoor Unit			ASAH09CETA ASAH09CETA-B	ASAH12CETA ASAH12CETA-B
kW Class			kW	2.5	3.5
Power Source	Single-phase, ~230V, 50Hz				
Sound Pressure Level	Cooling	H/M/L/Q	dB(A)	43/36/30/21	44/37/30/21
Airflow Rate	Cooling	H/M/L/Q	m³/h	770/560/430/250	800/600/450/250
Net Dimensions H x W x D				295 x 950 x 230	295 x 950 x 230
Weight	kg(lbs)			11.5 (25)	11.5 (25)
Connection Pipe Diameter	Liquid/Gas	mm		6.35/9.52	6.35/9.52

Compact Wall Mounted (Pearl Series)



Model No.	Indoor Unit			ASAH09CM	ASAH12CM
kW Class			kW	2.5	3.5
Power Source	Single-phase, ~230V, 50Hz				
Sound Pressure Level	Cooling	H/M/L/Q	dB(A)	43/36/30/21	44/37/30/21
Airflow Rate	Cooling	H/M/L/Q	m³/h	770/560/430/250	800/600/450/250
Net Dimensions H x W x D				270 x 834 x 222	270 x 834 x 222
Weight	kg(lbs)			10 (22)	10 (22)
Connection Pipe Diameter	Liquid/Gas	mm		6.35/9.52	6.35/9.52

Wall Mounted



Model No.	Indoor Unit			ASAH18CM	ASAH24CM
kW Class			kW	5.0	7.0
Power Source	Single-phase, ~230V, 50Hz				
Sound Pressure Level	Cooling	H/M/L/Q	dB(A)	45/40/35/29	49/40/35/29
Airflow Rate	Cooling	H/M/L/Q	m³/h	980/810/640/510	1170/850/640/510
Net Dimensions H x W x D				280 x 980 x 240	280 x 980 x 240
Weight	kg(lbs)			12.5(27)	12.5(27)
Connection Pipe Diameter	Liquid/Gas	mm		6.35/12.70	6.35/12.70

Compact Cassette Grid Type



Model No.	Indoor Unit			AUAH12CV	AUAH14CV	AUAH18CV
kW Class			kW	3.5	4.0	5.0
Power Source	Single-phase, ~230V, 50Hz					
Sound Pressure Level	Cooling	H/M/L/Q	dB(A)	37/34/31/28	38/35/32/29	42/37/33/29
Airflow Rate	Cooling	H/M/L/Q	m³/h	610/530/470/410	680/580/490/410	750/610/520/410
Net Dimensions H x W x D				245 x 570 x 570	245 x 570 x 570	245 x 570 x 570
Weight	kg(lbs)			15 (33)	15 (33)	15(33)
Panel	UTG-UFYF-W					
Connection Pipe Diameter	Liquid/Gas	mm		6.35/9.52	6.35/9.52	6.35/12.70

Mini Duct Type



Model No.	Indoor Unit			ARAH09CS	ARAH12CS	ARAH14CS	ARAH18CS
kW Class			kW	2.5	3.5	4.0	5.0
Power Source	Single-phase, ~230V, 50Hz						
Sound Pressure Level	Cooling	H/M/L/Q	dB(A)	29/26/24/23	31/27/25/23	35/30/27/23	33/29/26/23
Airflow Rate	Cooling	H/M/L/Q	m³/h	600/450/400/360	650/490/430/360	800/640/530/360	940/750/540/480
Net Dimensions H x W x D				198 x 700 x 450	198 x 700 x 450	198 x 700 x 450	198 x 900 x 450
Weight	kg(lbs)			15.5 (34)	15.5 (34)	15.5 (34)	18.5 (41)
Connection Pipe Diameter	Liquid/Gas	mm		6.35/9.52	6.35/9.52	6.35/9.52	6.35/12.70
External Static Pressure	Pa			0 to 30	0 to 30	0 to 50	0 to 50
Drain Pump				Standard	Standard	Standard	Standard

Medium Static Pressure Duct Type



Model No.	Indoor Unit			ARAH24CM
kW Class			kW	7.0
Power Source	Single-phase, ~230V, 50Hz			
Sound Pressure Level	Cooling	H/M/L/Q	dB(A)	38/33/30/27
Airflow Rate	Cooling	H/M/L/Q	m³/h	1500/2270/1020/860
Net Dimensions H x W x D				240 x 1,000 x 700
Weight	kg(lbs)			32
Connection Pipe Diameter	Liquid/Gas	mm		6.35/12.7
External Static Pressure	Pa			50 to 150