



Perfecting the Air

# ECO

## Comes First

With NEW **iSmile<sup>ECO</sup>**



**ECO friendlier**

**ECO savings**

**ECO smart**



WITH  
MORE THAN

90

YEARS OF  
EXPERIENCE



Perfecting the Air

since its inception, Daikin is renowned as the true creator in global air conditioning industry through relentless innovation in technology and product design.

Continuing its legacy as the leader in air conditioning, Daikin remains committed to refining next generation of cooling solution and taking the air conditioning beyond its previous limitations.

5

REASONS TO

**Smile**  
WITH DAIKIN

**GOOD  
DESIGN**



\*\*Trusted Brand Gold  
Award Winner since 2002



**1 BRAND FOR ALL COOLING SOLUTIONS**

widest range of air conditioners across the globe

**1 MULTI-AWARD WINNER**

& Well Trusted Brand\*\*

**1 dedicated team to offer customers with HIGH QUALITY AFTER SALES SERVICE**

**1<sup>st</sup> HDB MULTI ROOM air conditioning system\***

**1 & only Japanese company SPECIALIZING IN AIR CONDITIONING**



©D.H.T., 2000



# WHY DAIKIN?



AIR-CONDITIONING  
SPECIALIST



SALES  
AMOUNT TO  
**\$17**  
BILLION



**\$300**  
MILLION  
R&D INVESTMENT

UNLOCKING  
HUMAN POTENTIAL  
PEOPLE-CENTERED  
MANAGEMENT



**3** CORE  
TECHNOLOGIES  
HEAT PUMP  
INVERTER  
REFRIGERANT

**OVER  
90**  
WORLDWIDE  
PRODUCTION BASES



FOUNDED IN  
**1924**

**50%**  
LOCAL HIRES



SOLD IN OVER  
**150**  
COUNTRIES









PAGE 5

## ENVIRONMENT FRIENDLY R32 REFRIGERANT



As an equipment manufacturer, Daikin believes it must work to reduce the greenhouse emissions throughout the entire product life cycle. Hence, Daikin has adopted R32 into the multisplit series.



PAGE 6

## SUPERIOR 5 TICKS COOLS UP TO 5 ROOMS

Recognized as the highest energy efficiency rating of 5 Ticks, Daikin R32 series offers the most energy savings for your comfort & wallet



PAGE 8



## STRONGEST\* COOLING & QUIETEST at 19 dB(A)

With the strong cooling capacity\*, Daikin iSMILE series requires only a single outdoor unit to maintain comfort up to 5 rooms. Enjoy a full quiet relaxation with a sound level of only 19db(A)

PAGE 9

## BUILT-IN SMART CONTROL

Built-in with smarter, more convenient, more energy saving functions & controls to cool your home in style

DAIKIN Mobile Controller



INTELLIGENT EYE

PAGE 12



## UPGRADABLE TO D'SmartHome (OPTIONAL)

With a smart home system, the electronic devices and appliances can be connected to communicate with each other.



# R-32

## Next-generation refrigerant



**DAIKIN is the only aircon manufacturer in the world to produce both air conditioning equipment and refrigerant.**

As a refrigerant manufacturer, Daikin believes it has a responsibility to expand the use of substances with zero ozone layer depletion and to reduce greenhouse gas emissions. As an equipment manufacturer, Daikin believes it must work to reduce the greenhouse emissions throughout the entire product life cycle. Hence, Daikin has adopted R-32 into this series too.

## Zero

### Ozone Depletion Potential (ODP)

Ozone depletion is the reduction in amount of ozone layer in the stratosphere due to pollutants such as chlorofluorocarbons. By using R-32 Refrigerant, there is zero impact on the ozone layer depletion.

## Lower

### Global Warming Potential (GWP)

#### What is Global Warming Potential (GWP)?

GWP is a measure of how much energy the emission of 1 ton of a gas will be absorbed over a given period of time, relative to the emissions of 1 ton of Carbon Dioxide. The larger the GWP, the more that a given gas warms the Earth compared to CO<sub>2</sub> over that time period.

#### Environmental Impact of Air Conditioner Refrigerants and Trends

	Ozone Depletion Potential (ODP)	100 Year Global Warming Potential of Different Refrigerants*1
<b>R-12</b> (CFC)	<b>1.0</b>	<b>10,900</b>
<b>R-22</b> (HCFC)	<b>0.055</b>	<b>1,810</b>
<b>R-410A</b> (HFC)	<b>0</b>	<b>2,090</b>
<b>R-32</b> (HFC)	<b>0</b>	<b>675</b>

\*1) Values for 100 year global warming potential (GWP) from IPCC Fourth Assessment Report. Comparative 100 year GWP: HFC410A, 2,090; HFC32, 675.





# 5 ticks with MORE Benefits



Daikin R32 series are energy efficient which acquired 5 Ticks in full line up. Furthermore they have the strongest cooling capacity that can quickly cool every corner of the room. It ensures that you can enjoy energy saving and optimal comfort.



## SUPERIOR PERFORMANCE

The inverter changes the frequency of electric power, enabling capacity adjustment. **The 8.5kW class can provide superior performance up to 10.60kW.**



## EXCELLENT COMFORT WITH INVERTER TECHNOLOGY

More **Savings & Comfort** with technology that manages energy efficiency.



### How it works?



**INVERTER COMPRESSOR**  
Stable cooling temperature & energy saving

Our inverter system powers up to reach the desired temperature quickly. When approaching the desired temperature, the system maintains at a constant temperature without wasting energy, offering significant energy savings.



**NON-INVERTER COMPRESSOR**  
Unstable cooling temperature & Energy Wastage from restarting compressor

The non-inverter system continually starts and stops to maintain at the preset temperature. The repeated start-and-stop operation requires excess energy to restart the motor, resulting in energy wastage.





## MUCH LOWER ANNUAL ELECTRICAL BILLS



5 ticks  
**33%**  
savings\*

APPROX MORE THAN  
**\$300 a year**



## MORE SAVINGS EVEN IN STANDBY POWER MODE

Even when an air conditioner is not operating, it requires standby power. With low standby power, Daikin R32 series provides you with more savings.



## SUPERIOR 5 TICKS COOLS UP FROM 3 TO 5 ROOMS



MKM50VVMG



MKM75VVMG



MKM85VVMG



MKM100VVMG

UP TO **3** INDOOR  
UNITS

UP TO **4** INDOOR  
UNITS

UP TO **4** INDOOR  
UNITS

UP TO **5** INDOOR  
UNITS

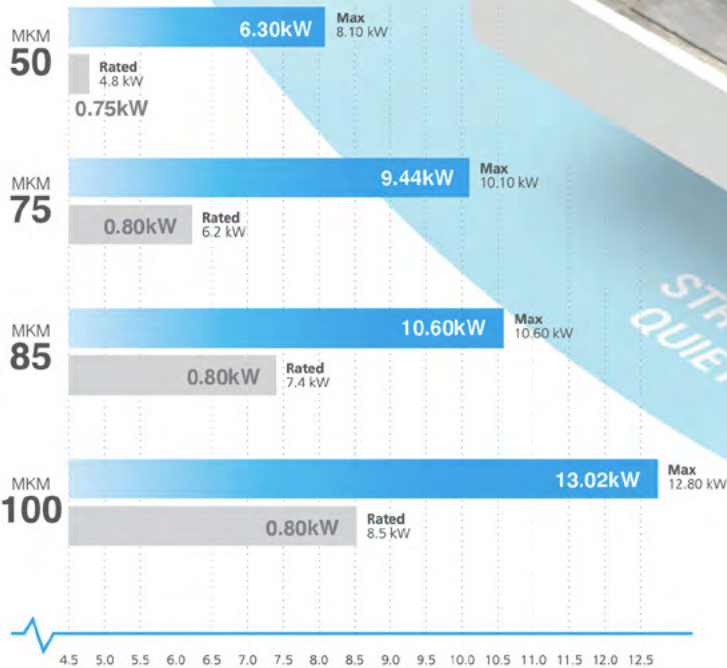


# STRONGEST COOLING & MORE SAVING

EVEN IN STANDBY POWER MODE WITH 5 TICKS IN FULL LINE UP

## STRONGEST COOLING CAPACITY

Daikin R32 series can pull out very high capacity.



STRONGEST COOLING & QUIETEST AT 19 dB(A)

## QUIETEST AT 19 dB(A)

R32 series of CTKM25/35VVMG offer whisper-quiet performance down to 19dB(A)\* to further enhance your sense of comfort.

\*Applicable for selected models only.

- 20 dB(A) - Whisper
- 30 dB(A) - Quiet rural area
- 40 dB(A) - Bird Chirping
- 40 dB(A) - Library









## Built-In DAIKIN SMARTPHONE CONTROL

Control your air conditioner from everywhere via smartphone



### Weekly schedule

The weekly timer allows up to 6 actions to be programmed for each day of the week. **You can schedule not only the ON/OFF operation but also set the temperatures.** Once the weekly timer is set up, the air conditioner operates each day without remote controller input.

- Start/stop operation
- Show outdoor temperature
- Show/set room temperature
- Child lock
- Error notification
- Set airflow direction
- Set fan speed
- Password setting
- Set operation mode: Auto/Cool/Heat/Fan/Dry



No more worries about forgetting to turn off the air conditioner



Compatible with a wide variety of indoor units



FREE DOWNLOAD  
Daikin Mobile Controller  
Application via



### HOW TO ACTIVATE DAIKIN R32 WiFi FUNCTION?

Visit <http://www.daikin.com.sg/wifi-setup> on how to activate Daikin iSmile WiFi function.

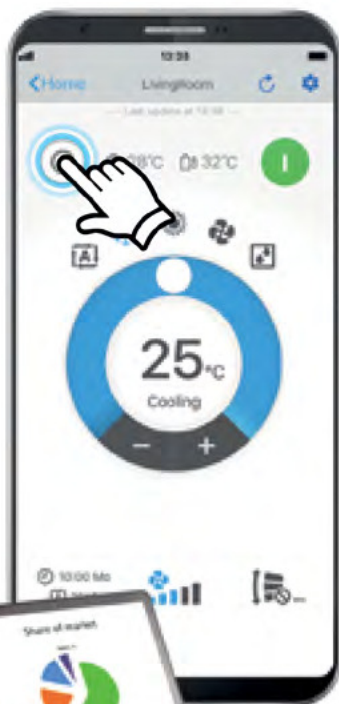




# MORE CONVENIENCES WITH DAIKIN MOBILE CONTROLLER

NO MORE WORRIES!  
WHEREVER,WHENEVER...  
YOUR AIR CONDITIONERS  
CAN BE CONTROLLED!

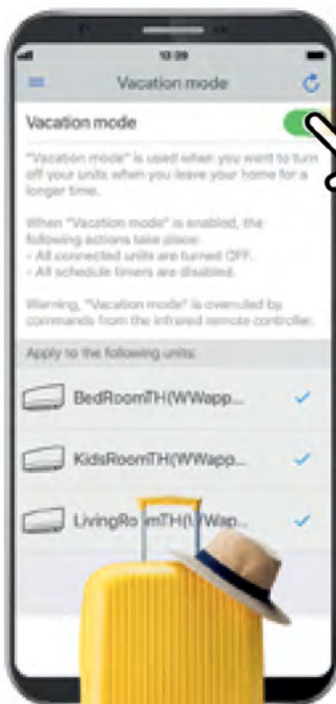
Forgetting to turn off  
air conditioners!



No matter how busy,  
everything is in control!

Before

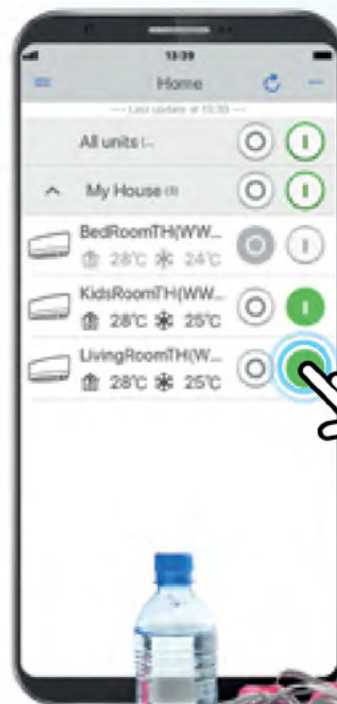
a long vacation



"Vacation mode" is used to  
deactivate all air conditioners.

During

morning jogging



Cool rooms are ready!

## HOW DOES DAIKIN MOBILE CONTROLLER WORK?



- 1 Adjust the air conditioner using the Daikin Mobile Controller application
- 2 The Wifi Router receives data from your phone and sends it to the receiver.
- 3 The receiver receives data and controls home comfort from wherever you are.



# COMMUNICATING WITH YOUR HOME



Smart home technology promises to provide your living with an enhanced lifestyle of comfort, convenience, home ecosystems and security. With a smart home system, a variety of electronic devices and appliances can be connected to communicate with each other as well as with you.

Whether you're at work or on vacation, you can seamlessly control your air-conditioners, air purifier, lightings and even security systems from your smartphone.

## MAKING YOUR HOME SMARTER



COMFORT



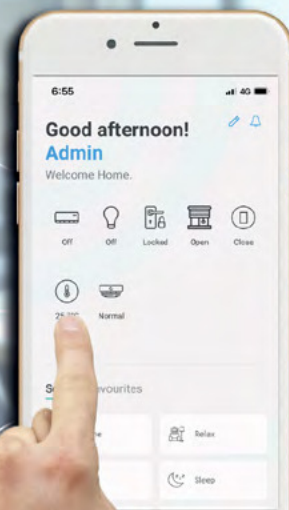
ENERGY



SECURITY



LIFESTYLE



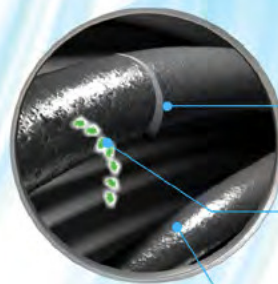


# SUPERB AIR QUALITY PM 2.5 FILTER

## WHAT IS PM 2.5?

### PM stand for Particulate Matter

that is smaller than 2.5 micron. (mixture of solid particles and liquid) droplets found in the air)



Human hair  
50-70  $\mu\text{m}$



Dust, pollen, mold  
< 10  $\mu\text{m}$



Combustion, particles,  
organic compounds,  
metals, etc.  
< 2.5  $\mu\text{m}$



## HEALTH EFFECTS OF PM 2.5 PARTICLES

- Small enough to be breathed deep into the lungs.
- Children, people over 65, pregnant women are highly sensitive.



## IN PURSUIT OF BETTER AIR THROUGH TECHNOLOGIES OF AIR CONDITIONING AND FILTER

With the prevalence of air contaminants such as PM2.5, bacteria, viruses, and allergens, air environments are having significant impacts on people's health, and society looks to technology to improve indoor and outdoor air environments. People spend more than 90% of their time indoors, the risks to health increased due to exposure to air pollution indoors.

We believe that it will become increasingly important to develop technologies that improve indoor air environments by removing pollutants, preventing their emission, blocking out polluted air.

With the newly added Dust collection PM2.5 Filter in this ismile series, quality of indoor air can be improved significantly and helps to keep home cleaner and healthier, improving the quality of sleep.

### Notes:

- This filter collects particles as small as 2.5 microns passing through the filter.
- The effectiveness of this filter depends on room conditions and the usage of air conditioner.



# Super Convenience

**Bedroom**  
Monday to Friday

Program 1: **11.30 p.m.**

**On 23°C**



Program 2: **3.00 a.m.**

**Off**



Program 3: **6.30 a.m.**

**On 23°C**



Program 4: **8.00 a.m.**

**Off**



## Weekly Timer

### 0.5°C Step Setting

Temperatures can be set in precise steps of 0.5°C, allowing you to make fine adjustments for optimum comfort.

These subtle changes are useful when you need to make temperatures "slightly higher" or "slightly lower".

They also mean you do not have to constantly readjust the set temperature, helping to lower power consumption.

Besides ON/OFF operation, our weekly timer enables you to schedule settings for day, time and temperature. You can customize your desired temperature at different timings of each day of the week, up to 4 timer settings.\*



24 Hour On/Off

OFF 1:00  
ON 6:00

Off timer at 1:00 a.m. and On timer at 6:00 a.m.

# Super Savings

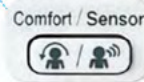
## Intelligent eye



### Energy saving with Intelligent Eye Sensor

Infrared sensors will detect movement in your room and adjust the airflow direction to ensure excellent cooling comfort.

This function is designed with 2 air-flow programs for greater comfort.



Remote control cycle when button is pressed

#### Sensor mode



When there is no movement for 20 minutes, the set temperature automatically adjust 2°C higher.

When someone is back to the room, the air conditioner returns to the set temperature.



**NEW!** **Comfort mode**  
This mode is providing a comfortable air flow that will not come in direct contact with people.

Combination of comfort airflow & Intelligent eye

# Super Comfort



## 3-D airflow

**NEW!**

The Daikin 3-D Airflow function combines vertical and horizontal auto-swing to distribute air evenly to the corners of the room, spreading comfort more widely throughout the room.



### How 3D airflow works?

The flaps and louvers swing in turn, expanding the comfort zone





Simple yet stylish indoor unit designed to blend gracefully with any interior layout of your home.



STYLISH & COMPACT  
*Design*

#### WITH THE COMPACT SIZE,

you can install our indoor units above the door at your home to solve space constraint as well as compliment your interior layout.\*

\*This compact size available from 2.5 kW to 5.0 kW



285 mm

770 mm



#### EASY INSTALLATION

Designed with your needs in mind, our compact outdoor unit allows easy installation through a narrow window or limited space.



BEST FOR NARROW WINDOW

LOWEST  
HEIGHT\*

695 mm

930 mm

# WIRELESS REMOTE CONTROLLER

**NEW**

**CTKM25/35/50 (ARC466A41)  
CTKM60/71 (ARC466A43)**

## FREQUENTLY USED FUNCTIONS

- 1 Start & Confirm Setting
- 2 Select Fan Speed
  - Auto Fan Speed
  - Indoor Unit Quiet Operation
- 3 Super Powerful Mode
- 4 Sets Room Temperature  
0.5°C Step Setting
- 5 Select Mode  
(Cooling / Dry / Fan Only)
- 6 • Econo Mode  
• Outdoor Unit Quiet Operation
- 7 Set Vertical Airflow
- 8 Set Horizontal Airflow
- 9 Comfort Airflow Mode
- 10 Intelligent Eye Mode

## TIMER MODE

- 11 Weekly Timer Setting
- 12 Start & Confirm Setting
- 13 Copy Setting
- 14 Goes Back
- 15 Select Timer Option  
(Mode, Setting, Day,  
Time & Temperature)
- 16 Goes Next
- 17 24 Hour Off Timer  
 Night Set Mode
- 18 24 Hour On Timer
- 19 Cancels Timer
- 20 Sets Clock



## FOR DUCTED TYPE

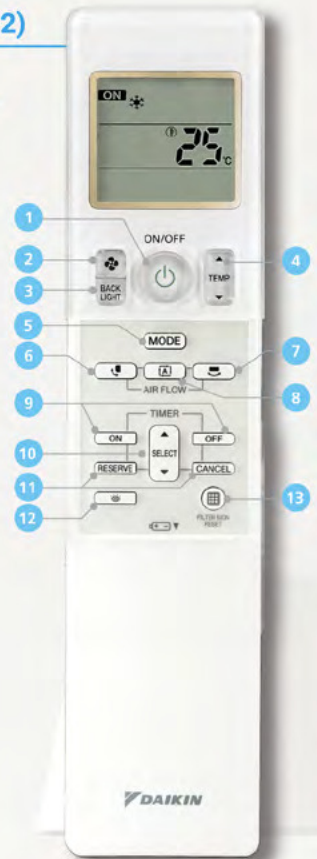
**FDMR50/60/71 (BRC086A22)**

## FREQUENTLY USED FUNCTIONS

- 1 On/Off Switch
- 2 Select Fan Speed
  - Auto Fan Speed
  - Indoor Unit Quiet Operation
- 3 On/Off Backlight
- 4 Sets Room Temperature
- 5 Select Mode  
(Cooling / Dry / Fan Only)
- 6 Set Vertical Airflow
- 7 Set Horizontal Airflow
- 8 Automatic Airflow Mode

## TIMER MODE

- 9 On/Off Timer
- 10 Programming Timer  
(Start and/or Stop Time)
- 11 Reserves/Cancels Timer
- 12 Inspection Button (To be  
used by qualified service persons  
for maintenance purposed only)
- 13 Filter Sign Reset



## FOR DUCTED TYPE

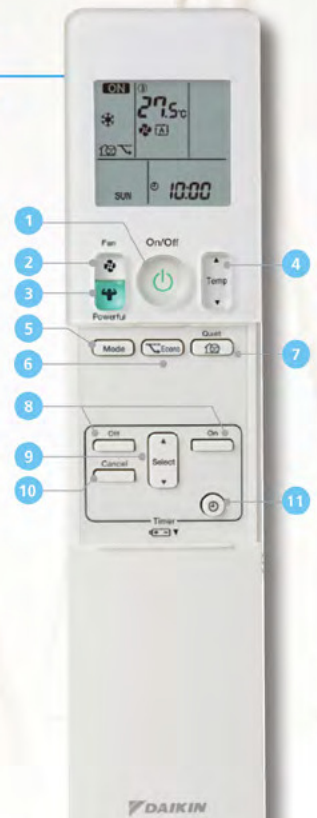
**CDKM 25/35/50/60 VVMG  
(BRC086A12)**

## FREQUENTLY USED FUNCTIONS

- 1 Start & Confirm Setting
- 2 Select Fan Speed
  - Auto Fan Speed
  - Indoor Unit Quiet Operation
- 3 Super Powerful Mode
- 4 Sets Room Temperature
- 5 Select Mode  
(Cooling / Dry / Fan Only)
- 6 Econo Mode
- 7 Outdoor Unit Quiet

## TIMER MODE

- 8 On/Off Timer
- 9 Select Timer Option
- 10 Cancels Timer
- 11 Set Clock



©D.H.T.,2000





**COOLS UP TO 3 ROOMS**

**MKM50VVMG** 14,300 btu/hr (up to max of 21,500 btu/hr)



**COOLS UP TO 4 ROOMS**

**MKM75VVMG** 20,500 btu/hr (up to max of 32,100 btu/hr)

**MKM85VVMG** 25,200 btu/hr (up to max of 36,200 btu/hr)



## DAIKIN INVERTER MULTI-SPLIT 5 TICKS

# FLEXIBLE COMBINATIONS- ANSWERS TO EVERY NEED

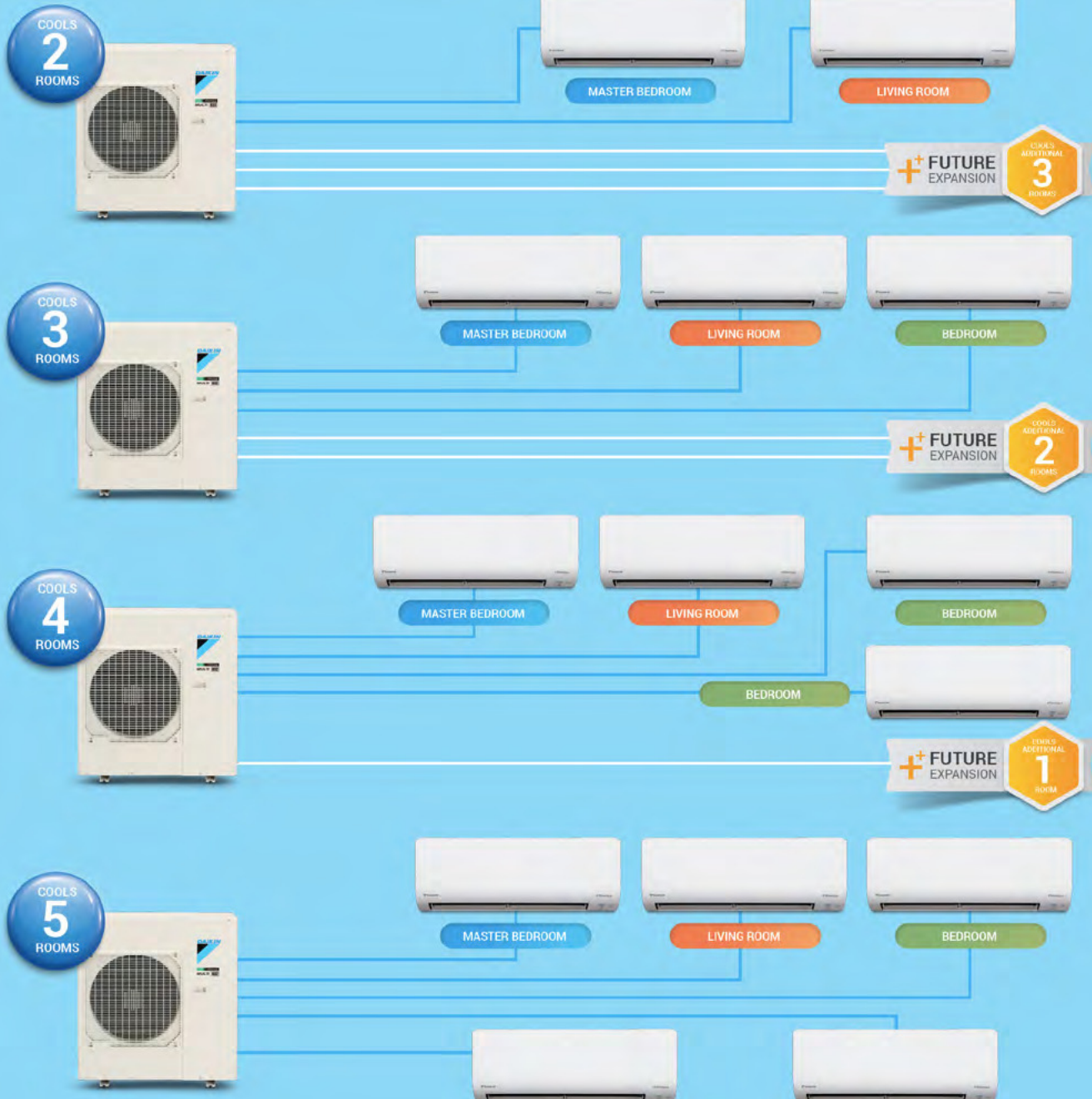
\*IDU = Indoor Unit

With wide range of Daikin R32 series, you can select any outdoor unit that is suitable for your need.

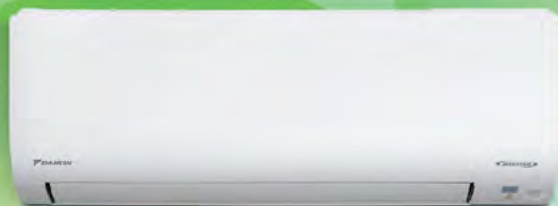
MODEL	1 IDU*	2 IDU*	3 IDU*	4 IDU*	5 IDU*
MKM50VVMG	✓	✓	✓		
MKM75VVMG	✓	✓	✓	✓	
MKM85VVMG	✓	✓	✓	✓	
MKM100VVMG	✓	✓	✓	✓	✓

### COOLS UP TO 5 ROOMS

MKM100VVMG 29,400 btu/hr (up to max of 43,700 btu/hr)



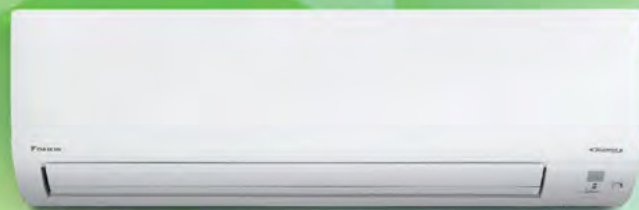




## INVERTER SERIES INDOOR UNIT WALL MOUNTED TYPE

**CTKM25/35/50VVMG**

CAPACITY CLASS		25	35	50
Model Name	Cooling only	CTKM25VVMG	CTKM35VVMG	CTKM50VVMG
Cooling Capacity	Btu/h	8500	11900	17100
	kW	2.5	3.5	5.0
Front Panel Color		White		
Dimension (HxWxD)	mm	285 x 770 x 223		
Weight	kg	8		9
Operation Sound (SL-H)	dBA	19 - 43	19 - 44	28 - 45
Piping Connection Gas/Liquid	mm	Ø9.5 / Ø6.4		Ø12.7 / Ø6.4
Air Flow Rate	m <sup>3</sup> /min (cfm)	11.8(415)	12.0 (424)	12.2 (431)
Fan Speed		5 Steps, Quiet, Auto		
Air Direction Control		Right, Left, Horizontal, Downwards		
Air Filter		Mould Proof Air Filter / Dust Collection Filter (PM2.5)		
Built in Wireless LAN Connecting Adaptor		Daikin Mobile Controller (BRP072C42) with Remote Control PC Board set (BRP067A42)		
Wireless LAN Connecting Adaptor		IEEE802.11 b/g/n (2.4 GHz), Output Power 0 dBm~18 dBm		



## INVERTER SERIES INDOOR UNIT WALL MOUNTED TYPE

**CTKM60/71VVMG**

CAPACITY CLASS		60	71
Model Name	Cooling only	CTKM60VVMG	CTKM71VVMG
Cooling Capacity	Btu/h	20500	24200
	kW	6.0	7.1
Front Panel color		White	
Dimension (HxWxD)	mm	295 x 990 x 263	
Weight	kg	13	
Operation Sound (SL-H)	dBA	29 - 48	30 - 49
Piping Connection Gas/Liquid	mm	Ø12.7 / Ø6.4	Ø15.9 / Ø6.4
Air Flow Rate	m <sup>3</sup> /min (cfm)	19.2 (679)	20.2 (711)
Fan Speed		5 Steps, Quiet, Auto	
Air Direction Control		Right, Left, Horizontal, Downwards	
Air Filter		Mould Proof Air Filter / Dust Collection Filter (PM2.5)	
Built in Wireless LAN Connecting Adaptor		Daikin Mobile Controller (BRP072C42) with Remote Control PC Board set (BRP980B42)	
Wireless LAN Connecting Adaptor		IEEE802.11 b/g/n (2.4 GHz), Output Power 0 dBm ~18 dBm	

## INVERTER SERIES INDOOR UNIT DUCTED CONNECTED TYPE CDKM25/35 VVMG



CAPACITY CLASS		25	35
Model name	Cooling Only	CDKM25VVMG	CDKM35VVMG
Cooling Capacity	Btu/h	8,530	11,940
	kW/h	2.5	3.5
Dimension (HxWxD)	mm	200 x 900 x 620	
Weight	kg	25	
Operation Sound (SL-H)	dBA	29-35	
Piping Connection Gas/Liquid	mm	Ø 9.5 / Ø 6.4	
Air Flow Rate	m <sup>3</sup> /min (cfm)	9.5 (335)	10.0 (353)
Fan Speed		5 Steps, Quiet, Auto	
External Static Pressure	Pa	40	
Wireless LAN Connecting Adaptor (optional)		Daikin Mobile Controller (BRP072C42)	

## INVERTER SERIES INDOOR UNIT DUCTED CONNECTED TYPE CDKM 50/60 VVMG



CAPACITY CLASS		50	60
Model name	Cooling Only	CDKM50VVMG	CDKM60VVMG
Cooling Capacity	Btu/h	17,060	20,470
	kW/h	5.0	6.0
Dimension (HxWxD)	mm	200 x 900x 620	200 X 1100 X 620
Weight	kg	27	30
Operation Sound (SL-H)	dBA	31-37	32-38
Piping Connection Gas/Liquid	mm	Ø 12.7 / Ø 6.4	
Air Flow Rate	m <sup>3</sup> /min (cfm)	12.0 (424)	16.0 (565)
Fan Speed		5 Steps, Quiet, Auto	
External Static Pressure	Pa	40	
Wireless LAN Connecting Adaptor (optional)		Daikin Mobile Controller (BRP072C42)	

## INVERTER SERIES INDOOR UNIT DUCTED CONNECTED TYPE FDMF 50/60/71 VVMG



CAPACITY CLASS		50	60	71
Model Name	Cooling Only	FDMF50VVMG	FDMF60VVMG	FDMF71VVMG
Cooling Capacity	Btu/h	17,060	20,470	24,200
	kW/h	5.0	6.0	7.1
Dimension (HxWxD)	mm	245 x 1000 x 800		
Weight	kg	37		
Operation Sound (L-H)	dBA	31-35		33-38
Piping Connection Gas/Liquid	mm	Ø12.7 x Ø6.4		Ø15.9 X Ø6.4
Air Flow Rate	m <sup>3</sup> /min	18		23
Fan Speed		3 steps, Auto		
External Static Pressure	Pa	50 (50, 150 : Changeable in 11 steps by remote controller)		



## INVERTER SERIES OUTDOOR UNIT

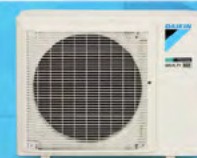
### MKM50VVMG



CAPACITY CLASS		50	
Model Name		MKM50VVMG	
NEA MELS Tick		5 Ticks	
Compressor Type		Hermetically sealed swing type	
Cooling rated capacity (min – max)	kW	4.2 (1.2-6.3)	
	Btu/h	14300	
Sound Levels (SL/H)	dB(A)	44 / 49	
Dimension (HxWxD)	mm	550 x 675 x 284	
Weight	kg	37	
Refrigerant		R32	
Piping Length	Max length (m)	Total 50 Each room 25	
	Max height (m)	Indoor to outdoor 15 Indoor to indoor 7.5	
Connected Piping	Gas (mm)	Ø9.5 x 3	
	liquid (mm)	Ø6.4 x 3	
Power Supply		1 Phase, 220-240V, 50Hz / 220-230V 60Hz	
Connection Port		3	

## INVERTER SERIES OUTDOOR UNIT

### MKM75/85VVMG



CAPACITY CLASS		75		85	
Model Name		MKM75VVMG		MKM85VVMG	
NEA MELS Tick		5 Ticks		5 Ticks	
Compressor Type		Hermetically sealed swing type			
Cooling rated capacity (min – max)	kW	6.0 (1.6-9.4)		7.4 (1.6-10.6)	
	Btu/h	20500		25200	
Sound Levels (SL/H)	dB(A)	44 / 53		45 / 54	
Dimension (HxWxD)	mm	695 x 930 x 350			
Weight	kg	49		52	
Refrigerant		R32			
Piping Length	Max length (m)	Total 60 Each room 30		Total 70 Each room 30	
	Max height (m)	Indoor to outdoor 15 Indoor to indoor 7.5			
Connected Piping	Gas (mm)	Ø9.5 x 2 Ø12.7 x 2		Ø9.5 x 1 Ø12.7 x 1 Ø15.9 x 2	
	liquid (mm)	Ø6.4 x 4			
Power Supply		1 Phase, 220-240V, 50Hz / 220-230V 60Hz			
Connection Port		4			

## INVERTER SERIES OUTDOOR UNIT

### MKM100VVMG



CAPACITY CLASS		100	
Model Name		MKM100VVMG	
NEA MELS Tick		5 Ticks	
Compressor Type		Hermetically sealed swing type	
Cooling rated capacity (min – max)	kW	8.61 (2.0-12.8)	
	Btu/h	29400	
Sound Levels (SL/H)	dB(A)	46 / 54	
Dimension (HxWxD)	mm	990 x 940 x 320	
Weight	kg	79	
Refrigerant		R32	
Piping Length	Max length (m)	Total 80 Each room 30	
	Max height (m)	Indoor to outdoor 15 Indoor to indoor 7.5	
Connected Piping	Gas (mm)	Ø9.5 x 2 Ø12.7 x 1 Ø15.9 x 2	
	liquid (mm)	Ø6.4 x 5	



## COMFORTABLE AIRFLOW

**POWER AIRFLOW FLAP**

The Power-Airflow Flap flattens out during cooling operation to deliver cool air to the corners of a room.

**POWER AIRFLOW DUAL FLAPS**

The Power-Airflow Dual Flaps can flatten out during cooling operation to deliver cool air to the corners of a room.

**WIDE-ANGLE LOUVERS**

The Wide-Angle Louvers provide wide airflow coverage for effective operation no matter where the indoor unit is placed in a room.

**VERTICAL AUTO-SWING (UP AND DOWN)**

This function automatically moves the flaps up and down to distribute air across a room.

**HORIZONTAL AUTO-SWING (LEFT AND RIGHT)**

Horizontal Auto-Swing automatically moves the louvers to the left and right to cover a room with cool air.

**3-D AIRFLOW**

This function combines Vertical and Horizontal Auto-Swing to circulate a cloud of cool air right to the corners of even large spaces. The flaps and louvers swing in turn.

**COMFORT AIRFLOW MODE**

This function prevents uncomfortable drafts from blowing directly on to the body. To prevent drafts, the flap moves upward during cooling operation.

## COMFORT CONTROL

**AUTO FAN SPEED**

The microprocessor automatically adjusts the fan speed to high to rapidly reach the set temperature. Once the temperature is achieved, this function reduces the fan speed to low.

**INDOOR UNIT QUIET OPERATION**

Indoor unit operating sound pressure levels are decreased from the Low setting fan speed using the wireless remote controller.

**OUTDOOR UNIT QUIET OPERATION**

Outdoor unit operating sound pressure levels are decreased from the rated operation sound using the wireless remote controller.

**INTELLIGENT EYE (AUTO ENERGY SAVING)**

Intelligent Eye with its infrared sensor automatically controls air conditioner operation according to human movement in a room. When there is no movement for 20 minutes, it adjusts the temperature by 2°C for energy savings.

**TWO-AREA INTELLIGENT EYE (FOCUS AND COMFORT)**

This function uses its infrared sensor to direct airflow either toward or away from people.

**PROGRAMME DRY FUNCTION**

The computer chip works to rid the room of humidity while maintaining the most consistent temperature possible. It automatically controls the temperature and airflow rate.

## TIMER

**WEEKLY TIMER**

The Weekly Timer allows up to four actions to be programmed for each day of the week. It is possible to schedule not only the on and off times, but also the desired temperatures during these periods. The copy function also makes the setting much easier.

**COUNT UP-DOWN ON / OFF TIMER**

The operation start and stop times can be set with the touch of a single button and preset for a period of one to 12 hours in one hour increments. When the Off Timer is set, Night Set Mode is activated automatically.

**24-HOUR ON / OFF TIMER**

This timer can start or stop the air conditioner within a 24-hour period. It can be preset in 10-minute steps by pressing the On/Off timer button on the wireless remote controller. The On timer and Off timer can be used in combination.

**NIGHT SET MODE**

Pressing the Off timer button automatically selects Night Set Mode. This function prevents excessive cooling or heating for a pleasant sleep. After 60 minutes, the room temperature is raised by 0.5°C for cooling operation.

## LIFESTYLE CONVENIENCE

**SUPER POWERFUL OPERATION**

This function boosts cooling performance for 20 minute period. It is convenient when the air conditioner is first turned on or it is necessary to change the room temperature quickly.

**ECONO MODE**

This mode limits maximum power consumption. This improves operating efficiency and also prevents circuit breakers from being overloaded.

**INDOOR UNIT ON / OFF SWITCH**

The unit can be conveniently started by hand if the wireless remote controller is misplaced or its batteries are not charged.

**BUILT IN WIRELESS LAN CONNECTING ADAPTER**

This wireless LAN adapter is installed in the indoor unit. It effectively turns your smartphone into a remote controller that can be used inside or outside the home. Together they help to maintain comfort while saving energy, and eliminate any worries about forgetting to turn off your air conditioner.

**WIRELESS REMOTE CONTROLLER (BACKLIGHT)**

The backlit LCD allows easy operation in the dark.

**PRIORITY ROOM SETTING (OUTDOOR UNIT)**

This function assigns preferential air conditioning to the indoor unit in the priority room. The unit receives priority control over Inverter Powerful Operation. Outdoor Unit Quiet Operation can be set easily from the remote controller in the priority room.

## CLEANLINESS

**MOLD PROOF AIR FILTER**

The air filter is impregnated with a mould preventive. The substance stops any growth, increase in number or activity by mould on the filter surface.

**DUST COLLECTION FILTER (PM 2.5)**

The filter collects particle as small as 2.5 microns.

**WIPE CLEAN FLAT PANEL**

The flat panel design can be cleaned with only the single pass of a cloth across its smooth surface. The flat panel can also be easily removed for more thorough cleaning.

**REMOVABLE DRAIN PAN**

The drain pan collects condensation from the indoor heat exchanger fins. Removable drain pans help to reduce the cleaning time and ensure a perfect finish.

**TITANIUM APATITE DEODORISING FILTER (OPTION)**

This filter contains titanium apatite. While the filter's micron-level fibres trap dust, the titanium apatite adsorbs odours and allergens, as well as deodorises odours. The filter can be used for up to three years with proper maintenance.

**DEODORIZING FILTER (ENZYME BLUE) (OPTION)**

This filter catches and decomposes allergens in the dust as well as removes odours. This filter delivers consistent performance for approximately three years if it is washed with water once every six months. This filter is meant to replace all current Titanium Apatite Deodorizing Filters.

## WORRY FREE

**AUTO-RESTART (AFTER POWER FAILURE)**

The air conditioner memorises the settings for operation mode (cooling, dry and fan only), airflow, temperature, etc., and automatically returns to them when power is restored after a power failure.

**SELF-DIAGNOSIS WITH DIGITAL DISPLAY**

Malfunction codes are shown on the digital display panel of the wireless remote controller for fast and easy maintenance.



# FUNCTIONS

## INDOOR UNIT

### CTKM25/35/50/60/71VVMG

Wall Mounted Type



285 x 770 x 223 mm



295 x 990 x 263 mm

	FUNCTION	25	35	50	60	71
COMFORTABLE AIRFLOW	Power airflow flap	•	•	•		
	Power airflow dual flaps				•	•
	Wide-angle louvers	•	•	•	•	•
	Vertical auto-swing (up and down)	•	•	•	•	•
	Horizontal auto-swing (left and right)	•	•	•	•	•
	3-D airflow	•	•	•	•	•
	Comfort airflow mode	•	•	•	•	•
COMFORT CONTROL	Auto fan speed	•	•	•	•	•
	Indoor unit quiet operation	•	•	•	•	•
	Outdoor unit quiet operation	•	•	•	•	•
	Intelligent eye (auto energy saving)	•	•	•	•	•
	Two-area intelligent eye (focus and comfort)	•	•	•	•	•
	Programme dry function	•	•	•	•	•
LIFESTYLE CONVENIENCE	Super powerful operation	•	•	•	•	•
	Econo mode	•	•	•	•	•
	Indoor unit ON / OFF switch	•	•	•	•	•
	Built in Wireless LAN connecting adapter	•	•	•	•	•
	Wireless remote controller (backlight)	•	•	•	•	•
CLEANLINESS	Mold proof air filter	•	•	•	•	•
	Dust collection filter (PM 2.5)	•	•	•	•	•
	Wipe clean flat panel	•	•	•	•	•
	Removable drain pan	•	•	•	•	•
	Titanium Apatite Deodorizing Filter (option)	•	•	•	•	•
	Deodorizing filter (enzyme blue) (option)	•	•	•	•	•
TIMER	Weekly timer	•	•	•	•	•
	Count up-down ON / OFF timer	•	•	•	•	•
	24-Hour ON / OFF timer	•	•	•	•	•
	Night set mode	•	•	•	•	•
WORRY FREE	Auto-restart (after power failure)	•	•	•	•	•
	Self diagnosis with digital display	•	•	•	•	•

## OUTDOOR UNIT

### MKM50/75/85/100VVMG

	FUNCTION	50	75	85	100
LIFESTYLE CONVENIENCE	Priority room setting		•	•	•

Ducted Type

CDKM25/35VVMG CDKM50/60VVMG FDMF50/60/71VVMG



200 x 900 x 620 mm

200 x 1,100 x 620 mm

245 x 1000 x 800 mm

	FUNCTION	25	35	50	60	50	60
COMFORTABLE AIRFLOW	Power airflow flaps						
	Power airflow dual flaps						
	Wide-angle louvers						
	Vertical auto-swing (up and down)						
	Horizontal auto-swing (left and right)						
	3-D airflow <small>NEW</small>						
	Comfort Airflow Mode <small>NEW</small>						
COMFORT CONTROL	Auto Fan speed	•	•	•	•	•	•
	Indoor unit quiet operation	•	•	•	•		
	Outdoor unit quiet operation	•	•	•	•		
	Intelligent eye						
	Programme dry function	•	•	•	•	•	•
Fan only	•	•	•	•	•	•	
LIFESTYLE CONVENIENCE	Inverter powerful operation	•	•	•	•		
	Econo mode						
	Indoor unit ON/OFF switch	•	•	•	•	•	•
	R/C with backlight <small>NEW</small>					•	•
Home leave operation	•	•	•	•			
CLEANLINESS	Titanium apatite photocatalytic air purifying filter						
	Mold proof air filter						
	Wipe clean flat panel						
TIMER	Weekly timer <small>NEW</small>						
	24 hours On-Off timer	•	•	•	•		
	Night set mode	•	•	•	•		
WORRY FREE	Auto restart	•	•	•	•	•	•
	Self diagnosis with digital display	•	•	•	•	•	•



# COMBINATION CAPACITY



## OUTDOOR UNIT MKM50VVMG

Cooling [50Hz, 230V] [Input current without limit]

COMBINATION OF INDOOR UNIT	CAPACITY OF EACH INDOOR UNIT								
	Each capacity at rated (max) capacity (kW)			Total capacity (kW)		Total input (kW)		Total current (A)	
	A room	B room	C room	Rating	(min - max)	Rating	(min - max)	Rating	(min - max)
2.5	2.50 (3.43)	----	----	2.50	0.75 ~ 3.43	0.58	0.14 ~ 0.87	2.7	0.6 ~ 4.0
3.5	3.50 (4.20)	----	----	3.50	0.75 ~ 4.20	0.93	0.14 ~ 1.37	4.3	0.6 ~ 6.3
5.0	4.20 (5.00)	----	----	4.20	1.00 ~ 5.00	1.28	0.16 ~ 1.73	5.9	0.7 ~ 7.9
2.5+2.5	2.10 (2.65)	2.10 (2.65)	----	4.20	1.00 ~ 5.30	0.95	0.16 ~ 1.49	4.3	0.7 ~ 6.8
2.5+3.5	1.75 (2.27)	2.45 (3.18)	----	4.20	1.00 ~ 5.45	0.95	0.16 ~ 1.56	4.3	0.7 ~ 7.1
2.5+5.0	1.40 (1.93)	2.80 (3.87)	----	4.20	1.20 ~ 5.80	0.95	0.21 ~ 1.78	4.3	1.0 ~ 8.1
3.5+3.5	2.10 (2.80)	2.10 (2.80)	----	4.20	1.20 ~ 5.60	0.95	0.21 ~ 1.63	4.3	1.0 ~ 7.5
3.5+5.0	1.73 (2.43)	2.47 (3.47)	----	4.20	1.20 ~ 5.90	0.92	0.21 ~ 1.78	4.2	1.0 ~ 8.1
2.5+2.5+2.5	1.40 (2.10)	1.40 (2.10)	1.40 (2.10)	4.20	1.20 ~ 6.30	0.86	0.21 ~ 1.89	3.9	1.0 ~ 8.6
2.5+2.5+3.5	1.24 (1.85)	1.24 (1.85)	1.72 (2.59)	4.20	1.20 ~ 6.30	0.86	0.21 ~ 1.89	3.9	1.0 ~ 8.6

**Note:**

1. Cooling capacity is based on 27°CDB / 19°CWB (indoor temperature), 35°CDB (outdoor temperature)
2. The total ability of connected an indoor unit is up to 11.0kW.
3. It is possible to connect the indoor unit for one room only.

## OUTDOOR UNIT MKM75VVMG

Cooling [50Hz, 230V] [Input current without limit]

COMBINATION OF INDOOR UNIT	CAPACITY OF EACH INDOOR UNIT									
	Each capacity at rated (max) capacity (kW)				Total capacity (kW)		Total input (kW)		Total current (A)	
	A room	B room	C room	D room	Rating	(min - max)	Rating	(min - max)	Rating	(min - max)
2.5	2.50 (3.91)	----	----	----	2.50	0.80 ~ 3.91	0.58	0.22 ~ 1.11	2.7	1.1 ~ 5.1
3.5	3.50 (5.09)	----	----	----	3.50	0.80 ~ 5.09	0.88	0.22 ~ 1.56	4.1	1.1 ~ 7.2
5.0	5.00 (5.24)	----	----	----	5.00	0.80 ~ 5.24	1.68	0.21 ~ 2.36	7.7	1.0 ~ 10.9
6.0	6.00 (7.21)	----	----	----	6.00	0.80 ~ 7.21	1.50	0.20 ~ 2.81	6.9	1.0 ~ 12.9
2.5+2.5	2.50 (3.33)	2.50 (3.33)	----	----	5.00	1.00 ~ 6.65	1.22	0.21 ~ 2.32	5.6	1.0 ~ 10.7
2.5+3.5	2.50 (2.87)	3.50 (4.02)	----	----	6.00	1.00 ~ 6.89	1.67	0.21 ~ 2.75	7.7	1.0 ~ 12.6
2.5+5.0	2.11 (2.46)	3.89 (4.54)	----	----	6.00	1.00 ~ 7.00	1.61	0.20 ~ 2.99	7.4	1.0 ~ 13.7
2.5+6.0	1.76 (2.39)	4.24 (5.73)	----	----	6.00	1.00 ~ 8.12	1.29	0.20 ~ 2.97	6.0	1.0 ~ 13.6
3.5+3.5	3.00 (3.48)	3.00 (3.48)	----	----	6.00	1.00 ~ 6.95	1.67	0.21 ~ 3.05	7.7	1.0 ~ 14.0
3.5+5.0	2.59 (3.04)	3.41 (3.99)	----	----	6.00	1.00 ~ 7.03	1.61	0.20 ~ 2.99	7.4	1.0 ~ 13.7
3.5+6.0	2.21 (3.04)	3.79 (5.22)	----	----	6.00	1.00 ~ 8.26	1.29	0.20 ~ 3.01	6.0	1.0 ~ 13.8
5.0+5.0	3.00 (3.70)	3.00 (3.70)	----	----	6.00	1.00 ~ 7.39	1.59	0.20 ~ 2.97	7.3	1.0 ~ 13.6
5.0+6.0	2.60 (3.75)	3.40 (4.90)	----	----	6.00	1.00 ~ 8.65	1.24	0.19 ~ 3.04	5.7	0.9 ~ 14.0
2.5+2.5+2.5	2.00 (2.72)	2.00 (2.72)	2.00 (2.72)	----	6.00	1.20 ~ 8.15	1.24	0.22 ~ 2.94	5.7	1.1 ~ 13.5
2.5+2.5+3.5	1.76 (2.40)	1.76 (2.40)	2.47 (3.36)	----	6.00	1.20 ~ 8.16	1.22	0.22 ~ 2.93	5.6	1.1 ~ 13.5
2.5+2.5+5.0	1.56 (2.18)	1.56 (2.18)	2.88 (4.02)	----	6.00	1.20 ~ 8.38	1.27	0.21 ~ 2.91	5.9	1.0 ~ 13.4
2.5+2.5+6.0	1.36 (2.11)	1.36 (2.11)	3.27 (5.07)	----	6.00	1.20 ~ 9.29	1.15	0.21 ~ 2.90	5.3	1.0 ~ 13.3
2.5+3.5+3.5	1.58 (2.20)	2.21 (3.08)	2.21 (3.08)	----	6.00	1.20 ~ 8.36	1.29	0.22 ~ 2.97	6.0	1.1 ~ 13.6
2.5+3.5+5.0	1.42 (1.99)	1.98 (2.79)	2.60 (3.66)	----	6.00	1.20 ~ 8.44	1.27	0.21 ~ 2.91	5.9	1.0 ~ 13.4
3.5+3.5+3.5	2.00 (2.80)	2.00 (2.80)	2.00 (2.80)	----	6.00	1.20 ~ 8.40	1.29	0.22 ~ 3.02	6.0	1.1 ~ 13.9
2.5+2.5+2.5+2.5	1.50 (2.36)	1.50 (2.36)	1.50 (2.36)	1.50 (2.36)	6.00	1.60 ~ 9.43	1.22	0.30 ~ 2.97	5.6	1.4 ~ 13.6
2.5+2.5+2.5+3.5	1.36 (2.15)	1.36 (2.15)	1.36 (2.15)	1.92 (3.00)	6.00	1.60 ~ 9.44	1.22	0.30 ~ 2.97	5.6	1.4 ~ 13.6



## OUTDOOR UNIT MKM75VVMG

Cooling [50Hz, 230V] [Input current limit : 8.5A]

COMBINATION OF INDOOR UNIT	CAPACITY OF EACH INDOOR UNIT									
	Each capacity at rated (max) capacity (kW)				Total capacity (kW)		Total input (kW)		Total current (A)	
	A room	B room	C room	D room	Rating	(min - max)	Rating	(min - max)	Rating	(min - max)
2.5	2.50 (3.91)	---	---	---	2.50	0.80 - 3.91	0.58	0.22 - 1.11	2.7	1.1 - 5.1
3.5	3.50 (5.09)	---	---	---	3.50	0.80 - 5.09	0.88	0.22 - 1.56	4.1	1.1 - 7.2
5.0	5.00 (5.24)	---	---	---	5.00	0.80 - 5.24	1.68	0.21 - 1.85	7.7	1.0 - 8.5
6.0	6.00 (6.25)	---	---	---	6.00	0.80 - 6.25	1.50	0.20 - 1.86	6.9	1.0 - 8.6
2.5+2.5	2.50 (3.07)	2.50 (3.07)	---	---	5.00	1.00 - 6.14	1.22	0.21 - 1.85	5.6	1.0 - 8.5
2.5+3.5	2.50 (2.56)	3.50 (3.59)	---	---	6.00	1.00 - 6.15	1.67	0.21 - 1.85	7.7	1.0 - 8.5
2.5+5.0	2.11 (2.20)	3.89 (4.05)	---	---	6.00	1.00 - 6.25	1.61	0.20 - 1.85	7.4	1.0 - 8.5
2.5+6.0	1.76 (1.99)	4.24 (4.78)	---	---	6.00	1.00 - 6.77	1.29	0.20 - 1.84	6.0	1.0 - 8.5
3.5+3.5	3.00 (3.09)	3.00 (3.09)	---	---	6.00	1.00 - 6.17	1.67	0.21 - 1.85	7.7	1.0 - 8.5
3.5+5.0	2.59 (2.71)	3.41 (3.56)	---	---	6.00	1.00 - 6.27	1.61	0.20 - 1.85	7.4	1.0 - 8.5
3.5+6.0	2.21 (2.53)	3.79 (4.34)	---	---	6.00	1.00 - 6.87	1.29	0.20 - 1.84	6.0	1.0 - 8.5
5.0+5.0	3.00 (3.31)	3.00 (3.31)	---	---	6.00	1.00 - 6.62	1.59	0.20 - 1.85	7.3	1.0 - 8.5
5.0+6.0	2.60 (3.12)	3.40 (4.06)	---	---	6.00	1.00 - 7.18	1.24	0.19 - 1.86	5.7	0.9 - 8.6
2.5+2.5+2.5	2.00 (2.31)	2.00 (2.31)	2.00 (2.31)	---	6.00	1.20 - 6.94	1.24	0.22 - 1.85	5.7	1.1 - 8.5
2.5+2.5+3.5	1.76 (2.04)	1.76 (2.04)	2.47 (2.86)	---	6.00	1.20 - 6.95	1.22	0.22 - 1.85	5.6	1.1 - 8.5
2.5+2.5+5.0	1.56 (1.87)	1.56 (1.87)	2.88 (3.44)	---	6.00	1.20 - 7.17	1.27	0.21 - 1.85	5.9	1.0 - 8.5
2.5+2.5+6.0	1.36 (1.76)	1.36 (1.76)	3.27 (4.23)	---	6.00	1.20 - 7.76	1.15	0.21 - 1.84	5.3	1.0 - 8.5
2.5+3.5+3.5	1.58 (1.87)	2.21 (2.62)	2.21 (2.62)	---	6.00	1.20 - 7.10	1.29	0.22 - 1.85	6.0	1.1 - 8.5
2.5+3.5+5.0	1.42 (1.70)	1.98 (2.38)	2.60 (3.13)	---	6.00	1.20 - 7.22	1.27	0.21 - 1.85	5.9	1.0 - 8.5
3.5+3.5+3.5	2.00 (2.36)	2.00 (2.36)	2.00 (2.36)	---	6.00	1.20 - 7.07	1.29	0.22 - 1.85	6.0	1.1 - 8.5
2.5+2.5+2.5+2.5	1.50 (1.96)	1.50 (1.96)	1.50 (1.96)	1.50 (1.96)	6.00	1.60 - 7.83	1.22	0.30 - 1.85	5.6	1.4 - 8.5
2.5+2.5+2.5+3.5	1.36 (1.78)	1.36 (1.78)	1.36 (1.78)	1.92 (2.49)	6.00	1.60 - 7.83	1.22	0.30 - 1.85	5.6	1.4 - 8.5

**Note:**

1. Cooling capacity is based on 27°CDB / 19°CWB (indoor temperature), 35°CDB (outdoor temperature).
2. The total ability of connected an indoor unit is up to 11.0kW.
3. It is possible to connect the indoor unit for one room only.

## OUTDOOR UNIT MKM75VVMG

Cooling [50Hz, 230V] [Input current limit : 11.0A]

COMBINATION OF INDOOR UNIT	CAPACITY OF EACH INDOOR UNIT									
	Each capacity at rated (max) capacity (kW)				Total capacity (kW)		Total input (kW)		Total current (A)	
	A room	B room	C room	D room	Rating	(min - max)	Rating	(min - max)	Rating	(min - max)
2.5	2.50 (3.91)	---	---	---	2.50	0.80 - 3.91	0.58	0.22 - 1.11	2.7	1.1 - 5.1
3.5	3.50 (5.09)	---	---	---	3.50	0.80 - 5.09	0.88	0.22 - 1.56	4.1	1.1 - 7.2
5.0	5.00 (5.24)	---	---	---	5.00	0.80 - 5.24	1.68	0.21 - 2.36	7.7	1.0 - 10.9
6.0	6.00 (6.91)	---	---	---	6.00	0.80 - 6.91	1.50	0.20 - 2.38	6.9	1.0 - 10.9
2.5+2.5	2.50 (3.33)	2.50 (3.33)	---	---	5.00	1.00 - 6.65	1.22	0.21 - 2.32	5.6	1.0 - 10.7
2.5+3.5	2.50 (2.80)	3.50 (3.92)	---	---	6.00	1.00 - 6.72	1.67	0.21 - 2.39	7.7	1.0 - 11.0
2.5+5.0	2.11 (2.40)	3.89 (4.41)	---	---	6.00	1.00 - 6.81	1.61	0.20 - 2.38	7.4	1.0 - 10.9
2.5+6.0	1.76 (2.24)	4.24 (5.36)	---	---	6.00	1.00 - 7.60	1.29	0.20 - 2.37	6.0	1.0 - 10.9
3.5+3.5	3.00 (3.38)	3.00 (3.38)	---	---	6.00	1.00 - 6.75	1.67	0.21 - 2.39	7.7	1.0 - 11.0
3.5+5.0	2.59 (2.95)	3.41 (3.88)	---	---	6.00	1.00 - 6.83	1.61	0.20 - 2.38	7.4	1.0 - 10.9
3.5+6.0	2.21 (2.86)	3.79 (4.90)	---	---	6.00	1.00 - 7.76	1.29	0.20 - 2.40	6.0	1.0 - 11.0
5.0+5.0	3.00 (3.60)	3.00 (3.60)	---	---	6.00	1.00 - 7.20	1.59	0.20 - 2.37	7.3	1.0 - 10.9
5.0+6.0	2.60 (3.50)	3.40 (4.57)	---	---	6.00	1.00 - 8.07	1.24	0.19 - 2.40	5.7	0.9 - 11.0
2.5+2.5+2.5	2.00 (2.57)	2.00 (2.57)	2.00 (2.57)	---	6.00	1.20 - 7.72	1.24	0.22 - 2.38	5.7	1.1 - 10.9
2.5+2.5+3.5	1.76 (2.27)	1.76 (2.27)	2.47 (3.18)	---	6.00	1.20 - 7.73	1.22	0.22 - 2.37	5.6	1.1 - 10.9
2.5+2.5+5.0	1.56 (2.08)	1.56 (2.08)	2.88 (3.83)	---	6.00	1.20 - 8.00	1.27	0.21 - 2.40	5.9	1.0 - 11.0
2.5+2.5+6.0	1.36 (1.99)	1.36 (1.99)	3.27 (4.77)	---	6.00	1.20 - 8.75	1.15	0.21 - 2.38	5.3	1.0 - 10.9
2.5+3.5+3.5	1.58 (2.08)	2.21 (2.91)	2.21 (2.91)	---	6.00	1.20 - 7.90	1.29	0.22 - 2.37	6.0	1.1 - 10.9
2.5+3.5+5.0	1.42 (1.90)	1.98 (2.66)	2.60 (3.49)	---	6.00	1.20 - 8.05	1.27	0.21 - 2.40	5.9	1.0 - 11.0
3.5+3.5+3.5	2.00 (2.63)	2.00 (2.63)	2.00 (2.63)	---	6.00	1.20 - 7.90	1.29	0.22 - 2.38	6.0	1.1 - 10.9
2.5+2.5+2.5+2.5	1.50 (2.20)	1.50 (2.20)	1.50 (2.20)	1.50 (2.20)	6.00	1.60 - 8.80	1.22	0.30 - 2.38	5.6	1.4 - 10.9
2.5+2.5+2.5+3.5	1.36 (2.00)	1.36 (2.00)	1.36 (2.00)	1.92 (2.80)	6.00	1.60 - 8.81	1.22	0.30 - 2.38	5.6	1.4 - 10.9

## OUTDOOR UNIT MKM85VVMG

Cooling [50Hz, 230V] [Input current without limit]

COMBINATION OF INDOOR UNIT	CAPACITY OF EACH INDOOR UNIT									
	Each capacity at rated (max) capacity (kW)				Total capacity (kW)		Total input (kW)		Total current (A)	
	A room	B room	C room	D room	Rating	(min - max)	Rating	(min - max)	Rating	(min - max)
2.5	2.50 (3.93)	----	----	----	2.50	0.80 ~ 3.93	0.58	0.22 ~ 1.09	2.7	1.1 ~ 5.0
3.5	3.50 (5.10)	----	----	----	3.50	0.80 ~ 5.10	0.90	0.22 ~ 1.44	4.2	1.1 ~ 6.6
5.0	5.00 (6.55)	----	----	----	5.00	0.80 ~ 6.55	1.46	0.22 ~ 2.28	6.7	1.1 ~ 10.5
6.0	6.00 (7.57)	----	----	----	6.00	0.80 ~ 7.57	1.46	0.21 ~ 2.51	6.7	1.0 ~ 11.5
7.1	7.10 (8.03)	----	----	----	7.10	0.80 ~ 8.03	1.96	0.20 ~ 3.05	9.0	1.0 ~ 14.0
2.5+2.5	2.50 (3.47)	2.50 (3.47)	----	----	5.00	1.00 ~ 6.93	1.23	0.21 ~ 2.28	5.7	1.0 ~ 10.5
2.5+3.5	2.50 (3.02)	3.50 (4.22)	----	----	6.00	1.00 ~ 7.24	1.58	0.21 ~ 2.54	7.3	1.0 ~ 11.7
2.5+5.0	2.46 (2.97)	4.54 (5.47)	----	----	7.00	1.00 ~ 8.44	2.05	0.21 ~ 3.01	9.4	1.0 ~ 13.8
2.5+6.0	2.18 (2.57)	5.22 (6.18)	----	----	7.40	1.00 ~ 8.75	1.76	0.20 ~ 3.00	8.1	1.0 ~ 13.8
2.5+7.1	1.93 (2.28)	5.47 (6.47)	----	----	7.40	1.00 ~ 8.75	1.76	0.20 ~ 3.00	8.1	1.0 ~ 13.8
3.5+3.5	3.50 (4.04)	3.50 (4.04)	----	----	7.00	1.00 ~ 8.08	2.10	0.21 ~ 3.09	9.7	1.0 ~ 14.2
3.5+5.0	3.02 (3.65)	3.98 (4.80)	----	----	7.00	1.00 ~ 8.45	2.05	0.21 ~ 3.01	9.4	1.0 ~ 13.8
3.5+6.0	2.73 (3.23)	4.67 (5.53)	----	----	7.40	1.00 ~ 8.76	1.76	0.20 ~ 3.00	8.1	1.0 ~ 13.8
3.5+7.1	2.44 (2.89)	4.96 (5.87)	----	----	7.40	1.00 ~ 8.76	1.76	0.20 ~ 3.00	8.1	1.0 ~ 13.8
5.0+5.0	3.50 (4.25)	3.50 (4.25)	----	----	7.00	1.00 ~ 8.50	1.98	0.20 ~ 2.99	9.1	1.0 ~ 13.7
5.0+6.0	3.21 (3.81)	4.19 (4.98)	----	----	7.40	1.00 ~ 8.79	1.76	0.19 ~ 3.00	8.1	0.9 ~ 13.8
5.0+7.1	2.91 (3.46)	4.49 (5.33)	----	----	7.40	1.00 ~ 8.79	1.76	0.19 ~ 3.00	8.1	0.9 ~ 13.8
6.0+6.0	3.70 (4.89)	3.70 (4.89)	----	----	7.40	1.00 ~ 9.77	1.61	0.18 ~ 3.01	7.4	0.9 ~ 13.8
6.0+7.1	3.39 (4.47)	4.01 (5.30)	----	----	7.40	1.00 ~ 9.77	1.61	0.18 ~ 3.01	7.4	0.9 ~ 13.8
7.1+7.1	3.70 (4.89)	3.70 (4.89)	----	----	7.40	1.00 ~ 9.77	1.61	0.18 ~ 3.01	7.4	0.9 ~ 13.8
2.5+2.5+2.5	2.33 (2.98)	2.33 (2.98)	2.33 (2.98)	----	7.00	1.20 ~ 8.93	1.71	0.22 ~ 3.02	7.9	1.1 ~ 13.9
2.5+2.5+3.5	2.06 (2.68)	2.06 (2.68)	2.88 (3.76)	----	7.00	1.20 ~ 9.12	1.71	0.22 ~ 3.02	7.9	1.1 ~ 13.9
2.5+2.5+5.0	1.82 (2.43)	1.82 (2.43)	3.35 (4.47)	----	7.00	1.20 ~ 9.33	1.70	0.22 ~ 2.99	7.8	1.1 ~ 13.7
2.5+2.5+6.0	1.68 (2.20)	1.68 (2.20)	4.04 (5.26)	----	7.40	1.20 ~ 9.66	1.65	0.21 ~ 3.00	7.6	1.0 ~ 13.8
2.5+2.5+7.1	1.53 (2.08)	1.53 (2.08)	4.34 (5.89)	----	7.40	1.20 ~ 10.05	1.65	0.21 ~ 3.00	7.6	1.0 ~ 13.8
2.5+3.5+3.5	1.84 (2.45)	2.58 (3.43)	2.58 (3.43)	----	7.00	1.20 ~ 9.31	1.71	0.22 ~ 3.01	7.9	1.1 ~ 13.8
2.5+3.5+5.0	1.65 (2.20)	2.31 (3.08)	3.04 (4.06)	----	7.00	1.20 ~ 9.34	1.70	0.22 ~ 2.99	7.8	1.1 ~ 13.7
2.5+3.5+6.0	1.54 (2.10)	2.16 (2.93)	3.70 (5.03)	----	7.40	1.20 ~ 10.06	1.65	0.21 ~ 3.00	7.6	1.0 ~ 13.8
2.5+3.5+7.1	1.41 (1.92)	1.98 (2.69)	4.01 (5.45)	----	7.40	1.20 ~ 10.06	1.65	0.21 ~ 3.00	7.6	1.0 ~ 13.8
2.5+5.0+5.0	1.50 (2.00)	2.75 (3.69)	2.75 (3.69)	----	7.00	1.20 ~ 9.38	1.73	0.22 ~ 3.02	8.0	1.1 ~ 13.9
2.5+5.0+6.0	1.41 (1.92)	2.60 (3.54)	3.39 (4.61)	----	7.40	1.20 ~ 10.07	1.69	0.21 ~ 3.04	7.8	1.0 ~ 14.0
2.5+5.0+7.1	1.30 (1.77)	2.40 (3.26)	3.70 (5.04)	----	7.40	1.20 ~ 10.07	1.69	0.21 ~ 3.04	7.8	1.0 ~ 14.0
2.5+6.0+6.0	1.28 (1.78)	3.06 (4.26)	3.06 (4.26)	----	7.40	1.20 ~ 10.30	1.65	0.20 ~ 3.07	7.6	1.0 ~ 14.1
2.5+6.0+7.1	1.19 (1.64)	2.85 (3.95)	3.37 (4.67)	----	7.40	1.20 ~ 10.26	1.65	0.20 ~ 3.07	7.6	1.0 ~ 14.1
3.5+3.5+3.5	2.33 (3.11)	2.33 (3.11)	2.33 (3.11)	----	7.00	1.20 ~ 9.32	1.71	0.22 ~ 3.01	7.9	1.1 ~ 13.8
3.5+3.5+5.0	2.11 (2.82)	2.11 (2.82)	2.78 (3.71)	----	7.00	1.20 ~ 9.35	1.70	0.22 ~ 2.99	7.8	1.1 ~ 13.7
3.5+3.5+6.0	1.99 (2.71)	1.99 (2.71)	3.42 (4.64)	----	7.40	1.20 ~ 10.06	1.65	0.21 ~ 3.00	7.6	1.0 ~ 13.8
3.5+3.5+7.1	1.84 (2.50)	1.84 (2.50)	3.73 (5.06)	----	7.40	1.20 ~ 10.06	1.65	0.21 ~ 3.00	7.6	1.0 ~ 13.8
3.5+5.0+5.0	1.93 (2.58)	2.54 (3.40)	2.54 (3.40)	----	7.00	1.20 ~ 9.38	1.67	0.22 ~ 3.02	7.7	1.1 ~ 13.9
3.5+5.0+6.0	1.84 (2.50)	2.41 (3.29)	3.15 (4.29)	----	7.40	1.20 ~ 10.08	1.63	0.21 ~ 3.04	7.5	1.0 ~ 14.0
3.5+5.0+7.1	1.70 (2.32)	2.24 (3.05)	3.46 (4.71)	----	7.40	1.20 ~ 10.08	1.63	0.22 ~ 3.04	7.5	1.1 ~ 14.0
3.5+6.0+6.0	1.67 (2.31)	2.86 (3.96)	2.86 (3.96)	----	7.40	1.20 ~ 10.23	1.60	0.20 ~ 3.07	7.4	1.0 ~ 14.1
5.0+5.0+5.0	2.33 (3.14)	2.33 (3.14)	2.33 (3.14)	----	7.00	1.20 ~ 9.42	1.73	0.22 ~ 3.11	8.0	1.1 ~ 14.3
2.5+2.5+2.5+2.5	1.81 (2.47)	1.81 (2.47)	1.81 (2.48)	1.81 (2.47)	7.24	1.60 ~ 9.90	1.45	0.28 ~ 3.11	6.7	1.3 ~ 14.3
2.5+2.5+2.5+3.5	1.67 (2.25)	1.67 (2.25)	1.67 (2.25)	2.34 (3.15)	7.36	1.60 ~ 9.90	1.45	0.28 ~ 3.11	6.7	1.3 ~ 14.3
2.5+2.5+2.5+5.0	1.53 (2.05)	1.53 (2.05)	1.53 (2.05)	2.81 (3.77)	7.40	1.60 ~ 9.92	1.50	0.28 ~ 3.14	6.9	1.3 ~ 14.4
2.5+2.5+2.5+6.0	1.37 (1.90)	1.37 (1.90)	1.37 (1.90)	3.29 (4.54)	7.40	1.60 ~ 10.24	1.51	0.27 ~ 3.16	7.0	1.3 ~ 14.5
2.5+2.5+2.5+7.1	1.27 (1.75)	1.27 (1.75)	1.27 (1.75)	3.59 (4.99)	7.40	1.60 ~ 10.24	1.51	0.27 ~ 3.16	7.0	1.3 ~ 14.5
2.5+2.5+3.5+3.5	1.48 (2.06)	1.48 (2.06)	2.07 (2.89)	2.07 (2.89)	7.10	1.60 ~ 9.91	1.45	0.28 ~ 3.11	6.7	1.3 ~ 14.3
2.5+2.5+3.5+5.0	1.37 (1.90)	1.37 (1.90)	1.92 (2.65)	2.74 (3.49)	7.40	1.60 ~ 9.93	1.50	0.28 ~ 3.14	6.9	1.3 ~ 14.4
2.5+2.5+3.5+6.0	1.28 (1.77)	1.28 (1.77)	1.79 (2.47)	3.05 (4.23)	7.40	1.60 ~ 10.24	1.51	0.27 ~ 3.16	7.0	1.3 ~ 14.5
2.5+2.5+3.5+7.1	1.19 (1.70)	1.19 (1.70)	1.66 (2.38)	3.36 (4.82)	7.40	1.60 ~ 10.60	1.51	0.27 ~ 3.16	7.0	1.3 ~ 14.5
2.5+2.5+5.0+5.0	1.25 (1.75)	1.25 (1.75)	2.30 (3.22)	2.30 (3.22)	7.10	1.60 ~ 9.95	1.44	0.28 ~ 3.23	6.6	1.3 ~ 14.8
2.5+3.5+3.5+3.5	1.37 (1.91)	1.91 (2.67)	1.91 (2.67)	1.91 (2.67)	7.10	1.60 ~ 9.92	1.45	0.28 ~ 3.11	6.7	1.3 ~ 14.3
2.5+3.5+3.5+5.0	1.28 (1.76)	1.79 (2.47)	1.79 (2.47)	2.54 (3.24)	7.40	1.60 ~ 9.94	1.50	0.28 ~ 3.14	6.9	1.3 ~ 14.4
2.5+3.5+3.5+6.0	1.19 (1.65)	1.67 (2.31)	1.67 (2.31)	2.87 (3.96)	7.40	1.60 ~ 10.24	1.51	0.27 ~ 3.16	7.0	1.3 ~ 14.5
3.5+3.5+3.5+3.5	1.78 (2.48)	1.78 (2.48)	1.78 (2.48)	1.78 (2.48)	7.12	1.60 ~ 9.92	1.45	0.28 ~ 3.11	6.7	1.3 ~ 14.3
3.5+3.5+3.5+5.0	1.67 (2.30)	1.67 (2.30)	1.67 (2.30)	2.39 (3.03)	7.40	1.60 ~ 9.94	1.50	0.28 ~ 3.14	6.9	1.3 ~ 14.4



## OUTDOOR UNIT MKM85VVMG

Cooling [50Hz, 230V] [Input current limit : 8.5A]

COMBINATION OF INDOOR UNIT	CAPACITY OF EACH INDOOR UNIT									
	Each capacity at rated (max) capacity (kW)				Total capacity (kW)		Total input (kW)		Total current (A)	
	A room	B room	C room	D room	Rating	(min - max)	Rating	(min - max)	Rating	(min - max)
2.5	2.50 (3.93)	---	---	---	2.50	0.80 - 3.93	0.58	0.22 - 1.09	2.7	1.1 - 5.0
3.5	3.50 (5.10)	---	---	---	3.50	0.80 - 5.10	0.90	0.22 - 1.44	4.2	1.1 - 6.6
5.0	5.00 (5.83)	---	---	---	5.00	0.80 - 5.83	1.46	0.22 - 1.80	6.7	1.1 - 8.3
6.0	6.00 (6.58)	---	---	---	6.00	0.80 - 6.58	1.46	0.21 - 1.84	6.7	1.0 - 8.5
7.1	6.58 (6.58)	---	---	---	6.58	0.80 - 6.58	1.84	0.20 - 1.84	8.5	1.0 - 8.5
2.5+2.5	2.50 (3.09)	2.50 (3.09)	---	---	5.00	1.00 - 6.18	1.23	0.21 - 1.81	5.7	1.0 - 8.3
2.5+3.5	2.50 (2.58)	3.50 (3.61)	---	---	6.00	1.00 - 6.19	1.58	0.21 - 1.81	7.3	1.0 - 8.3
2.5+5.0	2.43 (2.43)	4.48 (4.48)	---	---	6.91	1.00 - 6.91	1.82	0.21 - 1.82	8.4	1.0 - 8.4
2.5+6.0	2.11 (2.11)	5.06 (5.06)	---	---	7.17	1.00 - 7.17	1.81	0.20 - 1.81	8.3	1.0 - 8.3
2.5+7.1	1.87 (1.87)	5.30 (5.30)	---	---	7.17	1.00 - 7.17	1.81	0.20 - 1.81	8.3	1.0 - 8.3
3.5+3.5	3.26 (3.26)	3.26 (3.26)	---	---	6.51	1.00 - 6.51	1.81	0.21 - 1.81	8.3	1.0 - 8.3
3.5+5.0	2.99 (2.99)	3.93 (3.93)	---	---	6.92	1.00 - 6.92	1.82	0.21 - 1.82	8.4	1.0 - 8.4
3.5+6.0	2.65 (2.65)	4.53 (4.53)	---	---	7.18	1.00 - 7.18	1.81	0.20 - 1.81	8.3	1.0 - 8.3
3.5+7.1	2.37 (2.37)	4.81 (4.81)	---	---	7.18	1.00 - 7.18	1.81	0.20 - 1.81	8.3	1.0 - 8.3
5.0+5.0	3.48 (3.48)	3.48 (3.48)	---	---	6.96	1.00 - 6.96	1.81	0.20 - 1.81	8.3	1.0 - 8.3
5.0+6.0	3.12 (3.12)	4.08 (4.08)	---	---	7.20	1.00 - 7.20	1.82	0.19 - 1.82	8.4	0.9 - 8.4
5.0+7.1	2.83 (2.83)	4.37 (4.37)	---	---	7.20	1.00 - 7.20	1.82	0.19 - 1.82	8.4	0.9 - 8.4
6.0+6.0	3.70 (4.00)	3.70 (4.00)	---	---	7.40	1.00 - 8.00	1.61	0.18 - 1.83	7.4	0.9 - 8.4
6.0+7.1	3.39 (3.66)	4.01 (4.34)	---	---	7.40	1.00 - 8.00	1.61	0.18 - 1.83	7.4	0.9 - 8.4
7.1+7.1	3.70 (4.00)	3.70 (4.00)	---	---	7.40	1.00 - 8.00	1.61	0.18 - 1.83	7.4	0.9 - 8.4
2.5+2.5+2.5	2.33 (2.44)	2.33 (2.44)	2.33 (2.44)	---	7.00	1.20 - 7.31	1.71	0.22 - 1.82	7.9	1.1 - 8.4
2.5+2.5+3.5	2.06 (2.20)	2.06 (2.20)	2.88 (3.08)	---	7.00	1.20 - 7.47	1.71	0.22 - 1.82	7.9	1.1 - 8.4
2.5+2.5+5.0	1.82 (1.99)	1.82 (1.99)	3.35 (3.66)	---	7.00	1.20 - 7.64	1.70	0.22 - 1.81	7.8	1.1 - 8.3
2.5+2.5+6.0	1.68 (1.80)	1.68 (1.80)	4.04 (4.31)	---	7.40	1.20 - 7.91	1.65	0.21 - 1.82	7.6	1.0 - 8.4
2.5+2.5+7.1	1.53 (1.70)	1.53 (1.70)	4.34 (4.84)	---	7.40	1.20 - 8.24	1.65	0.21 - 1.82	7.6	1.0 - 8.4
2.5+3.5+3.5	1.84 (2.01)	2.58 (2.81)	2.58 (2.81)	---	7.00	1.20 - 7.63	1.71	0.22 - 1.82	7.9	1.1 - 8.4
2.5+3.5+5.0	1.65 (1.80)	2.31 (2.53)	3.04 (3.32)	---	7.00	1.20 - 7.65	1.70	0.22 - 1.81	7.8	1.1 - 8.3
2.5+3.5+6.0	1.54 (1.72)	2.16 (2.40)	3.70 (4.12)	---	7.40	1.20 - 8.24	1.65	0.21 - 1.82	7.6	1.0 - 8.4
2.5+3.5+7.1	1.41 (1.57)	1.98 (2.20)	4.01 (4.47)	---	7.40	1.20 - 8.24	1.65	0.21 - 1.82	7.6	1.0 - 8.4
2.5+5.0+5.0	1.50 (1.64)	2.75 (3.02)	2.75 (3.02)	---	7.00	1.20 - 7.68	1.73	0.22 - 1.84	8.0	1.1 - 8.5
2.5+5.0+6.0	1.41 (1.57)	2.60 (2.90)	3.39 (3.78)	---	7.40	1.20 - 8.25	1.69	0.21 - 1.85	7.8	1.0 - 8.5
2.5+5.0+7.1	1.30 (1.45)	2.40 (2.67)	3.70 (4.13)	---	7.40	1.20 - 8.25	1.69	0.21 - 1.85	7.8	1.0 - 8.5
2.5+6.0+6.0	1.28 (1.43)	3.06 (3.42)	3.06 (3.42)	---	7.40	1.20 - 8.27	1.65	0.20 - 1.82	7.6	1.0 - 8.4
2.5+6.0+7.1	1.19 (1.33)	2.85 (3.18)	3.37 (3.76)	---	7.40	1.20 - 8.27	1.65	0.20 - 1.82	7.6	1.0 - 8.4
3.5+3.5+3.5	2.33 (2.54)	2.33 (2.54)	2.33 (2.54)	---	7.00	1.20 - 7.63	1.71	0.22 - 1.82	7.9	1.1 - 8.4
3.5+3.5+5.0	2.11 (2.31)	2.11 (2.31)	2.78 (3.04)	---	7.00	1.20 - 7.66	1.70	0.22 - 1.81	7.8	1.1 - 8.3
3.5+3.5+6.0	1.99 (2.22)	1.99 (2.22)	3.42 (3.80)	---	7.40	1.20 - 8.24	1.65	0.21 - 1.82	7.6	1.0 - 8.4
3.5+3.5+7.1	1.84 (2.05)	1.84 (2.05)	3.73 (4.15)	---	7.40	1.20 - 8.24	1.65	0.21 - 1.82	7.6	1.0 - 8.4
3.5+5.0+5.0	1.93 (2.12)	2.54 (2.79)	2.54 (2.79)	---	7.00	1.20 - 7.69	1.67	0.22 - 1.84	7.7	1.1 - 8.5
3.5+5.0+6.0	1.84 (2.05)	2.41 (2.69)	3.15 (3.51)	---	7.40	1.20 - 8.25	1.63	0.21 - 1.85	7.5	1.0 - 8.5
3.5+5.0+7.1	1.70 (1.90)	2.24 (2.50)	3.46 (3.85)	---	7.40	1.20 - 8.25	1.63	0.22 - 1.85	7.5	1.1 - 8.5
3.5+6.0+6.0	1.67 (1.86)	2.86 (3.19)	2.86 (3.19)	---	7.40	1.20 - 8.24	1.60	0.20 - 1.82	7.4	1.0 - 8.4
5.0+5.0+5.0	2.33 (2.53)	2.33 (2.53)	2.33 (2.53)	---	7.00	1.20 - 7.58	1.73	0.22 - 1.84	8.0	1.1 - 8.5
2.5+2.5+2.5+2.5	1.81 (1.99)	1.81 (1.99)	1.81 (1.99)	1.81 (1.99)	7.24	1.60 - 7.97	1.45	0.28 - 1.83	6.7	1.3 - 8.4
2.5+2.5+2.5+3.5	1.67 (1.81)	1.67 (1.81)	1.67 (1.81)	2.34 (2.54)	7.36	1.60 - 7.98	1.45	0.28 - 1.83	6.7	1.3 - 8.4
2.5+2.5+2.5+5.0	1.53 (1.65)	1.53 (1.65)	1.53 (1.65)	2.81 (3.04)	7.40	1.60 - 7.99	1.50	0.28 - 1.85	6.9	1.3 - 8.5
2.5+2.5+2.5+6.0	1.37 (1.50)	1.37 (1.50)	1.37 (1.50)	3.29 (3.60)	7.40	1.60 - 8.10	1.51	0.27 - 1.81	7.0	1.3 - 8.3
2.5+2.5+2.5+7.1	1.27 (1.39)	1.27 (1.39)	1.27 (1.39)	3.59 (3.94)	7.40	1.60 - 8.10	1.51	0.27 - 1.81	7.0	1.3 - 8.3
2.5+2.5+3.5+3.5	1.48 (1.66)	1.48 (1.66)	2.07 (2.33)	2.07 (2.33)	7.10	1.60 - 7.98	1.45	0.28 - 1.83	6.7	1.3 - 8.4
2.5+2.5+3.5+5.0	1.37 (1.53)	1.37 (1.53)	1.92 (2.14)	2.74 (2.81)	7.40	1.60 - 8.00	1.50	0.28 - 1.85	6.9	1.3 - 8.5
2.5+2.5+3.5+6.0	1.28 (1.40)	1.28 (1.40)	1.79 (1.96)	3.05 (3.35)	7.40	1.60 - 8.10	1.51	0.27 - 1.81	7.0	1.3 - 8.3
2.5+2.5+3.5+7.1	1.19 (1.30)	1.19 (1.30)	1.66 (1.82)	3.36 (3.69)	7.40	1.60 - 8.10	1.51	0.27 - 1.81	7.0	1.3 - 8.3
2.5+2.5+5.0+5.0	1.25 (1.39)	1.25 (1.39)	2.30 (2.55)	2.30 (2.55)	7.10	1.60 - 7.87	1.44	0.28 - 1.85	6.6	1.3 - 8.5
2.5+3.5+3.5+3.5	1.37 (1.53)	1.91 (2.15)	1.91 (2.15)	1.91 (2.15)	7.10	1.60 - 7.98	1.45	0.28 - 1.83	6.7	1.3 - 8.4
2.5+3.5+3.5+5.0	1.28 (1.42)	1.79 (1.99)	1.79 (1.99)	2.54 (2.61)	7.40	1.60 - 8.00	1.50	0.28 - 1.85	6.9	1.3 - 8.5
2.5+3.5+3.5+6.0	1.19 (1.31)	1.67 (1.83)	1.67 (1.83)	2.87 (3.14)	7.40	1.60 - 8.10	1.51	0.27 - 1.81	7.0	1.3 - 8.3
3.5+3.5+3.5+3.5	1.78 (2.00)	1.78 (2.00)	1.78 (2.00)	1.78 (3.14)	7.12	1.60 - 7.99	1.45	0.28 - 1.83	6.7	1.3 - 8.4
3.5+3.5+3.5+5.0	1.67 (1.85)	1.67 (1.85)	1.67 (1.85)	2.39 (3.14)	7.40	1.60 - 8.00	1.50	0.28 - 1.85	6.9	1.3 - 8.5

## OUTDOOR UNIT MKM85VVMG

Cooling [50Hz, 230V] [input current limit : 11.0A]

COMBINATION OF INDOOR UNIT	CAPACITY OF EACH INDOOR UNIT									
	Each capacity at rated (max) capacity (kW)				Total capacity (kW)		Total input (kW)		Total current (A)	
	A room	B room	C room	D room	Rating	(min - max)	Rating	(min - max)	Rating	(min - max)
2.5	2.50 (3.93)	---	---	---	2.50	0.80 - 3.93	0.58	0.22 - 1.09	2.7	1.1 - 5.0
3.5	3.50 (5.10)	---	---	---	3.50	0.80 - 5.10	0.90	0.22 - 1.44	4.2	1.1 - 6.6
5.0	5.00 (6.55)	---	---	---	5.00	0.80 - 6.55	1.46	0.22 - 2.28	6.7	1.1 - 10.5
6.0	6.00 (7.42)	---	---	---	6.00	0.80 - 7.42	1.46	0.21 - 2.38	6.7	1.0 - 10.9
7.1	7.10 (7.42)	---	---	---	7.10	0.80 - 7.42	1.96	0.20 - 2.38	9.0	1.0 - 10.9
2.5+2.5	2.50 (3.47)	2.50 (3.47)	---	---	5.00	1.00 - 6.93	1.23	0.21 - 2.28	5.7	1.0 - 10.5
2.5+3.5	2.50 (2.93)	3.50 (4.10)	---	---	6.00	1.00 - 7.02	1.58	0.21 - 2.35	7.3	1.0 - 10.8
2.5+5.0	2.46 (2.75)	4.54 (5.05)	---	---	7.00	1.00 - 7.80	2.05	0.21 - 2.35	9.4	1.0 - 10.8
2.5+6.0	2.18 (2.38)	5.22 (5.71)	---	---	7.40	1.00 - 8.09	1.76	0.20 - 2.34	8.1	1.0 - 10.8
2.5+7.1	1.93 (2.11)	5.47 (5.98)	---	---	7.40	1.00 - 8.09	1.76	0.20 - 2.34	8.1	1.0 - 10.8
3.5+3.5	3.50 (3.70)	3.50 (3.70)	---	---	7.00	1.00 - 7.39	2.10	0.21 - 2.35	9.7	1.0 - 10.8
3.5+5.0	3.02 (3.37)	3.98 (4.44)	---	---	7.00	1.00 - 7.81	2.05	0.21 - 2.35	9.4	1.0 - 10.8
3.5+6.0	2.73 (2.98)	4.67 (5.12)	---	---	7.40	1.00 - 8.10	1.76	0.20 - 2.34	8.1	1.0 - 10.8
3.5+7.1	2.44 (2.67)	4.96 (5.43)	---	---	7.40	1.00 - 8.10	1.76	0.20 - 2.34	8.1	1.0 - 10.8
5.0+5.0	3.50 (3.93)	3.50 (3.93)	---	---	7.00	1.00 - 7.86	1.98	0.20 - 2.34	9.1	1.0 - 10.8
5.0+6.0	3.21 (3.52)	4.19 (4.60)	---	---	7.40	1.00 - 8.12	1.76	0.19 - 2.35	8.1	0.9 - 10.8
5.0+7.1	2.91 (3.19)	4.49 (4.93)	---	---	7.40	1.00 - 8.12	1.76	0.19 - 2.35	8.1	0.9 - 10.8
6.0+6.0	3.70 (4.52)	3.70 (4.52)	---	---	7.40	1.00 - 9.03	1.61	0.18 - 2.36	7.4	0.9 - 10.9
6.0+7.1	3.39 (4.14)	4.01 (4.89)	---	---	7.40	1.00 - 9.03	1.61	0.18 - 2.36	7.4	0.9 - 10.9
7.1+7.1	3.70 (4.52)	3.70 (4.52)	---	---	7.40	1.00 - 9.03	1.61	0.18 - 2.36	7.4	0.9 - 10.9
2.5+2.5+2.5	2.33 (2.75)	2.33 (2.75)	2.33 (2.75)	---	7.00	1.20 - 8.25	1.71	0.22 - 2.36	7.9	1.1 - 10.9
2.5+2.5+3.5	2.06 (2.48)	2.06 (2.48)	2.88 (3.47)	---	7.00	1.20 - 8.43	1.71	0.22 - 2.36	7.9	1.1 - 10.9
2.5+2.5+5.0	1.82 (2.25)	1.82 (2.25)	3.35 (4.14)	---	7.00	1.20 - 8.63	1.70	0.22 - 2.34	7.8	1.1 - 10.8
2.5+2.5+6.0	1.68 (2.03)	1.68 (2.03)	4.04 (4.87)	---	7.40	1.20 - 8.93	1.65	0.21 - 2.34	7.6	1.0 - 10.8
2.5+2.5+7.1	1.53 (1.92)	1.53 (1.92)	4.34 (5.45)	---	7.40	1.20 - 9.29	1.65	0.21 - 2.34	7.6	1.0 - 10.8
2.5+3.5+3.5	1.84 (2.27)	2.58 (3.17)	2.58 (3.17)	---	7.00	1.20 - 8.61	1.71	0.22 - 2.35	7.9	1.1 - 10.8
2.5+3.5+5.0	1.65 (2.04)	2.31 (2.85)	3.04 (3.75)	---	7.00	1.20 - 8.64	1.70	0.22 - 2.34	7.8	1.1 - 10.8
2.5+3.5+6.0	1.54 (1.94)	2.16 (2.71)	3.70 (4.65)	---	7.40	1.20 - 9.30	1.65	0.21 - 2.34	7.6	1.0 - 10.8
2.5+3.5+7.1	1.41 (1.77)	1.98 (2.48)	4.01 (5.04)	---	7.40	1.20 - 9.30	1.65	0.21 - 2.34	7.6	1.0 - 10.8
2.5+5.0+5.0	1.50 (1.85)	2.75 (3.40)	2.75 (3.40)	---	7.00	1.20 - 8.66	1.73	0.22 - 2.37	8.0	1.1 - 10.9
2.5+5.0+6.0	1.41 (1.78)	2.60 (3.27)	3.39 (4.26)	---	7.40	1.20 - 9.31	1.69	0.21 - 2.39	7.8	1.0 - 11.0
2.5+5.0+7.1	1.30 (1.64)	2.40 (3.02)	3.70 (4.66)	---	7.40	1.20 - 9.31	1.69	0.21 - 2.39	7.8	1.0 - 11.0
2.5+6.0+6.0	1.28 (1.62)	3.06 (3.88)	3.06 (3.88)	---	7.40	1.20 - 9.38	1.65	0.20 - 2.35	7.6	1.0 - 10.8
2.5+6.0+7.1	1.19 (1.50)	2.85 (3.61)	3.37 (4.27)	---	7.40	1.20 - 9.38	1.65	0.20 - 2.35	7.6	1.0 - 10.8
3.5+3.5+3.5	2.33 (2.87)	2.33 (2.87)	2.33 (2.87)	---	7.00	1.20 - 8.61	1.71	0.22 - 2.35	7.9	1.1 - 10.8
3.5+3.5+5.0	2.11 (2.61)	2.11 (2.61)	2.78 (3.43)	---	7.00	1.20 - 8.64	1.70	0.22 - 2.34	7.8	1.1 - 10.8
3.5+3.5+6.0	1.99 (2.50)	1.99 (2.50)	3.42 (4.29)	---	7.40	1.20 - 9.30	1.65	0.21 - 2.35	7.6	1.0 - 10.8
3.5+3.5+7.1	1.84 (2.31)	1.84 (2.31)	3.73 (4.68)	---	7.40	1.20 - 9.30	1.65	0.21 - 2.35	7.6	1.0 - 10.8
3.5+5.0+5.0	1.93 (2.39)	2.54 (3.14)	2.54 (3.14)	---	7.00	1.20 - 8.67	1.67	0.22 - 2.37	7.7	1.1 - 10.9
3.5+5.0+6.0	1.84 (2.31)	2.41 (3.04)	3.15 (3.96)	---	7.40	1.20 - 9.31	1.63	0.21 - 2.39	7.5	1.0 - 11.0
3.5+5.0+7.1	1.70 (2.14)	2.24 (2.82)	3.46 (4.35)	---	7.40	1.20 - 9.31	1.63	0.22 - 2.39	7.5	1.1 - 11.0
3.5+6.0+6.0	1.67 (2.11)	2.86 (3.62)	2.86 (3.62)	---	7.40	1.20 - 9.35	1.60	0.20 - 2.35	7.4	1.0 - 10.8
5.0+5.0+5.0	2.33 (2.87)	2.33 (2.87)	2.33 (2.87)	---	7.00	1.20 - 8.61	1.73	0.22 - 2.38	8.0	1.1 - 10.9
2.5+2.5+2.5+2.5	1.81 (2.26)	1.81 (2.26)	1.81 (2.26)	1.81 (2.26)	7.24	1.60 - 9.05	1.45	0.28 - 2.37	6.7	1.3 - 10.9
2.5+2.5+2.5+3.5	1.67 (2.06)	1.67 (2.06)	1.67 (2.06)	2.34 (2.88)	7.36	1.60 - 9.06	1.45	0.28 - 2.37	6.7	1.3 - 10.9
2.5+2.5+2.5+5.0	1.53 (1.87)	1.53 (1.87)	1.53 (1.87)	2.81 (3.45)	7.40	1.60 - 9.07	1.50	0.28 - 2.40	6.9	1.3 - 11.0
2.5+2.5+2.5+6.0	1.37 (1.71)	1.37 (1.71)	1.37 (1.71)	3.29 (4.12)	7.40	1.60 - 9.26	1.51	0.27 - 2.35	7.0	1.3 - 10.8
2.5+2.5+2.5+7.1	1.27 (1.59)	1.27 (1.59)	1.27 (1.59)	3.59 (4.50)	7.40	1.60 - 9.26	1.51	0.27 - 2.35	7.0	1.3 - 10.8
2.5+2.5+3.5+3.5	1.48 (1.89)	1.48 (1.89)	2.07 (2.64)	2.07 (2.64)	7.10	1.60 - 9.06	1.45	0.28 - 2.37	6.7	1.3 - 10.9
2.5+2.5+3.5+5.0	1.37 (1.73)	1.37 (1.73)	1.92 (2.43)	2.74 (3.19)	7.40	1.60 - 9.08	1.50	0.28 - 2.40	6.9	1.3 - 11.0
2.5+2.5+3.5+6.0	1.28 (1.60)	1.28 (1.60)	1.79 (2.24)	3.05 (3.83)	7.40	1.60 - 9.26	1.51	0.27 - 2.35	7.0	1.3 - 10.8
2.5+2.5+3.5+7.1	1.19 (1.48)	1.19 (1.48)	1.66 (2.08)	3.36 (4.21)	7.40	1.60 - 9.26	1.51	0.27 - 2.35	7.0	1.3 - 10.8
2.5+2.5+5.0+5.0	1.25 (1.56)	1.25 (1.56)	2.30 (2.88)	2.30 (2.88)	7.10	1.60 - 8.88	1.44	0.28 - 2.34	6.6	1.3 - 10.8
2.5+3.5+3.5+3.5	1.37 (1.74)	1.91 (2.44)	1.91 (2.44)	1.91 (2.44)	7.10	1.60 - 9.07	1.45	0.28 - 2.37	6.7	1.3 - 10.9
2.5+3.5+3.5+5.0	1.28 (1.61)	1.79 (2.25)	1.79 (2.25)	2.54 (2.96)	7.40	1.60 - 9.08	1.50	0.28 - 2.40	6.9	1.3 - 11.0
2.5+3.5+3.5+6.0	1.19 (1.49)	1.67 (2.09)	1.67 (2.09)	2.87 (3.58)	7.40	1.60 - 9.26	1.51	0.27 - 2.35	7.0	1.3 - 10.8
3.5+3.5+3.5+3.5	1.78 (2.27)	1.78 (2.27)	1.78 (2.27)	1.78 (2.27)	7.12	1.60 - 9.07	1.45	0.28 - 2.37	6.7	1.3 - 10.9
3.5+3.5+3.5+5.0	1.67 (2.11)	1.67 (2.11)	1.67 (2.11)	2.39 (2.77)	7.40	1.60 - 9.09	1.50	0.28 - 2.40	6.9	1.3 - 11.0



## OUTDOOR UNIT MKM100VVMG

Cooling [50Hz, 230V] [Input current without limit]

COMBINATION OF INDOOR UNIT	CAPACITY OF EACH INDOOR UNIT										
	Each capacity at rated (max) capacity (kW)					Total capacity (kW)		Total Input (kW)		Total current (A)	
	A room	B room	C room	D room	E room	Rating	(min - max)	Rating	(min - max)	Rating	(min - max)
2.5	2.50 (3.94)	---	---	---	---	2.50	0.80-3.94	0.60	0.19-1.05	2.8	0.9-4.9
3.5	3.50 (5.11)	---	---	---	---	3.50	0.80-5.11	0.94	0.19-1.24	4.4	0.9-5.7
5.0	5.00 (6.56)	---	---	---	---	5.00	0.80-6.56	1.62	0.18-1.82	7.5	0.9-8.4
6.0	6.00 (7.61)	---	---	---	---	6.00	0.80-7.61	1.68	0.18-2.49	7.7	0.9-11.4
7.1	7.10 (8.10)	---	---	---	---	7.10	0.80-8.10	2.22	0.18-2.96	10.2	0.9-13.6
2.5+2.5	2.50 (3.25)	2.50 (3.25)	---	---	---	5.00	1.00-6.50	1.36	0.21-2.48	6.3	1.0-11.4
2.5+3.5	2.50 (3.13)	3.50 (4.39)	---	---	---	6.00	1.00-7.52	1.79	0.21-2.48	8.2	1.0-11.4
2.5+5.0	2.50 (3.11)	5.00 (5.71)	---	---	---	7.50	1.00-8.82	2.56	0.20-3.88	11.8	1.0-17.8
2.5+6.0	2.50 (2.95)	6.00 (7.07)	---	---	---	8.50	1.00-10.02	2.57	0.22-3.89	11.8	1.1-17.9
2.5+7.1	2.21 (2.71)	6.29 (7.70)	---	---	---	8.50	1.00-10.41	2.57	0.22-3.86	11.8	1.1-17.7
3.5+3.5	3.50 (4.12)	3.50 (4.12)	---	---	---	7.00	1.00-8.24	2.28	0.21-3.83	10.5	1.0-17.6
3.5+5.0	3.48 (3.89)	4.57 (5.11)	---	---	---	8.05	1.00-9.00	3.00	0.20-3.88	13.8	1.0-17.8
3.5+6.0	3.13 (3.84)	5.37 (6.58)	---	---	---	8.50	1.00-10.42	2.57	0.22-3.86	11.8	1.1-17.7
3.5+7.1	2.81 (3.44)	5.69 (6.98)	---	---	---	8.50	1.00-10.42	2.57	0.22-3.86	11.8	1.1-17.7
5.0+5.0	4.09 (4.64)	4.09 (4.64)	---	---	---	8.17	1.00-9.27	3.09	0.20-3.88	14.2	1.0-17.8
5.0+6.0	3.69 (4.53)	4.81 (5.92)	---	---	---	8.50	1.00-10.45	2.58	0.21-3.88	11.9	1.0-17.8
5.0+7.1	3.34 (4.11)	5.16 (6.34)	---	---	---	8.50	1.00-10.45	2.58	0.21-3.88	11.9	1.0-17.8
6.0+6.0	4.25 (5.65)	4.25 (5.65)	---	---	---	8.50	1.00-11.30	2.11	0.21-3.89	9.7	1.0-17.9
6.0+7.1	3.89 (5.18)	4.61 (6.12)	---	---	---	8.50	1.00-11.30	2.11	0.21-3.89	9.7	1.0-17.9
7.1+7.1	4.25 (5.81)	4.25 (5.81)	---	---	---	8.50	1.00-11.62	2.11	0.21-3.89	9.7	1.0-17.9
2.5+2.5+2.5	2.50 (3.39)	2.50 (3.39)	2.50 (3.39)	---	---	7.50	1.20-10.18	2.23	0.26-3.88	10.3	1.2-17.8
2.5+2.5+3.5	2.37 (3.00)	2.37 (3.00)	3.31 (4.19)	---	---	8.05	1.20-10.19	2.50	0.26-3.88	11.5	1.2-17.8
2.5+2.5+5.0	2.13 (2.77)	2.13 (2.77)	3.91 (5.09)	---	---	8.17	1.20-10.63	2.58	0.25-3.88	11.9	1.2-17.8
2.5+2.5+6.0	1.93 (2.72)	1.93 (2.72)	4.64 (6.52)	---	---	8.50	1.20-11.96	2.24	0.25-3.88	10.3	1.2-17.8
2.5+2.5+7.1	1.76 (2.47)	1.76 (2.47)	4.99 (7.02)	---	---	8.50	1.20-11.96	2.24	0.25-3.88	10.3	1.2-17.8
2.5+3.5+3.5	2.15 (2.82)	3.01 (3.94)	3.01 (3.94)	---	---	8.17	1.20-10.70	2.57	0.26-3.85	11.8	1.2-17.7
2.5+3.5+5.0	1.93 (2.53)	2.70 (3.55)	3.55 (4.66)	---	---	8.17	1.20-10.74	2.58	0.25-3.91	11.9	1.2-17.9
2.5+3.5+6.0	1.77 (2.52)	2.48 (3.53)	4.25 (6.04)	---	---	8.50	1.20-12.09	2.24	0.25-3.88	10.3	1.2-17.8
2.5+3.5+7.1	1.62 (2.32)	2.27 (3.25)	4.61 (6.59)	---	---	8.50	1.20-12.16	2.24	0.25-3.88	10.3	1.2-17.8
2.5+5.0+5.0	1.75 (2.30)	3.21 (4.24)	3.21 (4.24)	---	---	8.17	1.20-10.78	2.51	0.25-3.89	11.5	1.2-17.9
2.5+5.0+6.0	1.62 (2.33)	2.98 (4.28)	3.89 (5.58)	---	---	8.50	1.20-12.19	2.24	0.25-3.88	10.3	1.2-17.8
2.5+5.0+7.1	1.50 (2.15)	2.75 (3.95)	4.25 (6.09)	---	---	8.50	1.20-12.19	2.24	0.25-3.88	10.3	1.2-17.8
2.5+6.0+6.0	1.47 (2.21)	3.52 (5.31)	3.52 (5.31)	---	---	8.50	1.20-12.84	1.86	0.23-3.88	8.6	1.1-17.8
2.5+6.0+7.1	1.36 (2.06)	3.27 (4.94)	3.87 (5.84)	---	---	8.50	1.20-12.84	1.86	0.23-3.88	8.6	1.1-17.8
3.5+3.5+3.5	2.72 (3.57)	2.72 (3.57)	2.72 (3.57)	---	---	8.17	1.20-10.72	2.57	0.26-3.88	11.8	1.2-17.8
3.5+3.5+5.0	2.47 (3.24)	2.47 (3.24)	3.24 (4.27)	---	---	8.17	1.20-10.75	2.58	0.25-3.88	11.9	1.2-17.8
3.5+3.5+6.0	2.29 (3.28)	2.29 (3.28)	3.92 (5.61)	---	---	8.50	1.20-12.17	2.24	0.25-3.88	10.3	1.2-17.8
3.5+3.5+7.1	2.11 (3.02)	2.11 (3.02)	4.28 (6.13)	---	---	8.50	1.20-12.17	2.24	0.25-3.88	10.3	1.2-17.8
3.5+5.0+5.0	2.25 (3.06)	2.96 (4.03)	2.96 (4.03)	---	---	8.17	1.20-11.12	2.51	0.25-3.89	11.5	1.2-17.9
3.5+5.0+6.0	2.11 (3.03)	2.77 (3.98)	3.62 (5.18)	---	---	8.50	1.20-12.19	2.24	0.25-3.88	10.3	1.2-17.8
3.5+5.0+7.1	1.96 (2.81)	2.57 (3.69)	3.97 (5.69)	---	---	8.50	1.20-12.19	2.24	0.25-3.88	10.3	1.2-17.8
3.5+6.0+6.0	1.92 (2.90)	3.29 (4.97)	3.29 (4.97)	---	---	8.50	1.20-12.84	1.86	0.23-3.88	8.6	1.1-17.8
5.0+5.0+5.0	2.72 (3.72)	2.72 (3.72)	2.72 (3.72)	---	---	8.17	1.20-11.15	2.50	0.25-3.90	11.5	1.2-17.9
5.0+5.0+6.0	2.57 (3.70)	2.57 (3.70)	3.36 (4.82)	---	---	8.50	1.20-12.22	2.16	0.25-3.86	9.9	1.2-17.7
2.5+2.5+2.5+2.5	2.04 (2.97)	2.04 (2.97)	2.04 (2.97)	2.04 (2.97)	---	8.17	1.60-11.88	2.17	0.34-3.88	10.0	1.6-17.8
2.5+2.5+2.5+3.5	1.86 (2.70)	1.86 (2.70)	1.86 (2.70)	2.60 (3.79)	---	8.17	1.60-11.89	2.17	0.34-3.88	10.0	1.6-17.8
2.5+2.5+2.5+5.0	1.69 (2.46)	1.69 (2.46)	1.69 (2.46)	3.11 (4.54)	---	8.17	1.60-11.92	2.17	0.33-3.89	10.0	1.6-17.9
2.5+2.5+2.5+6.0	1.57 (2.35)	1.57 (2.35)	1.57 (2.35)	3.78 (5.64)	---	8.50	1.60-12.69	1.98	0.31-3.88	9.1	1.5-17.8
2.5+2.5+2.5+7.1	1.46 (2.17)	1.46 (2.17)	1.46 (2.17)	4.13 (6.18)	---	8.50	1.60-12.69	1.98	0.31-3.88	9.1	1.5-17.8
2.5+2.5+3.5+3.5	1.70 (2.48)	1.70 (2.48)	2.38 (3.47)	2.38 (3.47)	---	8.17	1.60-11.90	2.17	0.34-3.88	10.0	1.6-17.8
2.5+2.5+3.5+5.0	1.56 (2.28)	1.56 (2.28)	2.18 (3.19)	2.87 (4.18)	---	8.17	1.60-11.93	2.17	0.33-3.89	10.0	1.6-17.9
2.5+2.5+3.5+6.0	1.47 (2.19)	1.47 (2.19)	2.05 (3.06)	3.52 (5.25)	---	8.50	1.60-12.69	1.98	0.31-3.88	9.1	1.5-17.8
2.5+2.5+3.5+7.1	1.36 (2.03)	1.36 (2.03)	1.91 (2.85)	3.87 (5.78)	---	8.50	1.60-12.69	1.98	0.31-3.88	9.1	1.5-17.8
2.5+2.5+5.0+5.0	1.44 (2.11)	1.44 (2.11)	2.65 (3.87)	2.65 (3.87)	---	8.17	1.60-11.96	2.17	0.33-3.87	10.0	1.6-17.8
2.5+2.5+5.0+6.0	1.36 (2.04)	1.36 (2.04)	2.51 (3.75)	2.27 (4.88)	---	8.50	1.60-12.71	1.91	0.31-3.86	8.8	1.5-17.7
2.5+3.5+3.5+3.5	1.57 (2.30)	2.20 (3.22)	2.20 (3.22)	2.20 (3.22)	---	8.17	1.60-11.96	2.17	0.34-3.88	10.0	1.6-17.8
2.5+3.5+3.5+5.0	1.45 (2.13)	2.03 (2.98)	2.03 (2.98)	2.67 (3.91)	---	8.17	1.60-12.00	2.17	0.33-3.89	10.0	1.6-17.9
2.5+3.5+3.5+6.0	1.37 (2.05)	1.92 (2.87)	1.92 (2.87)	3.29 (4.91)	---	8.50	1.60-12.70	1.92	0.31-3.88	8.8	1.5-17.8
2.5+3.5+5.0+5.0	1.34 (1.97)	1.88 (2.76)	2.47 (3.62)	2.47 (3.62)	---	8.17	1.60-11.97	2.17	0.33-3.87	10.0	1.6-17.8
3.5+3.5+3.5+3.5	2.04 (3.01)	2.04 (3.01)	2.04 (3.01)	2.04 (3.01)	---	8.17	1.60-12.04	2.17	0.34-3.88	10.0	1.6-17.8
3.5+3.5+3.5+5.0	1.89 (2.81)	1.89 (2.81)	1.89 (2.81)	2.49 (3.70)	---	8.17	1.60-12.13	2.17	0.33-3.89	10.0	1.6-17.9
2.5+2.5+2.5+2.5+2.5	1.64 (2.56)	1.64 (2.56)	1.64 (2.56)	1.64 (2.56)	1.64 (2.56)	8.20	2.00-12.82	1.90	0.40-3.89	8.7	1.9-17.9
2.5+2.5+2.5+2.5+3.5	1.52 (2.37)	1.52 (2.37)	1.52 (2.37)	1.52 (2.37)	2.13 (3.32)	8.20	2.00-12.82	1.90	0.40-3.89	8.7	1.9-17.9
2.5+2.5+2.5+2.5+5.0	1.44 (2.20)	1.44 (2.20)	1.44 (2.20)	1.44 (2.20)	2.65 (4.04)	8.40	2.00-12.85	1.96	0.40-3.90	9.0	1.9-17.9
2.5+2.5+2.5+2.5+6.0	1.35 (2.03)	1.35 (2.03)	1.35 (2.03)	1.35 (2.03)	3.21 (4.88)	8.61	2.00-13.02	1.77	0.36-3.86	8.2	1.7-17.7
2.5+2.5+2.5+3.5+3.5	1.41 (2.21)	1.41 (2.21)	1.41 (2.21)	1.98 (3.08)	1.98 (3.08)	8.20	2.00-12.83	1.90	0.40-3.89	8.7	1.9-17.9
2.5+2.5+2.5+3.5+5.0	1.35 (2.06)	1.35 (2.06)	1.35 (2.06)	1.88 (2.88)	2.48 (3.78)	8.40	2.00-12.85	1.96	0.40-3.90	9.0	1.9-17.9
2.5+2.5+3.5+3.5+3.5	1.32 (2.07)	1.32 (2.07)	1.85 (2.90)	1.85 (2.90)	1.85 (2.90)	8.20	2.00-12.84	1.90	0.40-3.90	8.7	1.9-17.9



## OUTDOOR UNIT MKM100VVMG

Cooling [50Hz, 230V] [Input current limit : 8.5A]

COMBINATION OF INDOOR UNIT	CAPACITY OF EACH INDOOR UNIT										
	Each capacity at rated (max) capacity (kW)					Total capacity (kW)		Total input (kW)		Total current (A)	
	A room	B room	C room	D room	E room	Rating	(min - max)	Rating	(min - max)	Rating	(min - max)
2.5	2.50 (3.94)	---	---	---	---	2.50	0.80~3.94	0.60	0.19~1.05	2.8	0.9~4.9
3.5	3.50 (5.11)	---	---	---	---	3.50	0.80~5.11	0.94	0.19~1.24	4.4	0.9~5.7
5.0	5.00 (6.56)	---	---	---	---	5.00	0.80~6.56	1.62	0.18~1.82	7.5	0.9~8.4
6.0	6.00 (6.39)	---	---	---	---	6.00	0.80~6.39	1.68	0.18~1.85	7.7	0.9~8.5
7.1	6.39 (6.39)	---	---	---	---	6.39	0.80~6.39	1.85	0.18~1.85	8.5	0.9~8.5
2.5+2.5	2.50 (3.06)	2.50 (3.06)	---	---	---	5.00	1.00~6.12	1.36	0.21~1.85	6.3	1.0~8.5
2.5+3.5	2.50 (2.55)	3.50 (3.58)	---	---	---	6.00	1.00~6.13	1.79	0.21~1.85	8.2	1.0~8.5
2.5+5.0	2.13 (2.13)	3.91 (3.91)	---	---	---	6.04	1.00~6.04	1.80	0.20~1.80	8.3	1.0~8.3
2.5+6.0	2.03 (2.03)	4.88 (4.88)	---	---	---	6.91	1.00~6.91	1.80	0.22~1.80	8.3	1.1~8.3
2.5+7.1	1.80 (1.80)	5.11 (5.11)	---	---	---	6.91	1.00~6.91	1.80	0.22~1.80	8.3	1.1~8.3
3.5+3.5	3.07 (3.07)	3.07 (3.07)	---	---	---	6.14	1.00~6.14	1.85	0.21~1.85	8.5	1.0~8.5
3.5+5.0	2.61 (2.61)	3.44 (3.44)	---	---	---	6.05	1.00~6.05	1.80	0.20~1.80	8.3	1.0~8.3
3.5+6.0	2.55 (2.55)	4.37 (4.37)	---	---	---	6.92	1.00~6.92	1.80	0.22~1.80	8.3	1.1~8.3
3.5+7.1	2.28 (2.28)	4.64 (4.64)	---	---	---	6.92	1.00~6.92	1.80	0.22~1.80	8.3	1.1~8.3
5.0+5.0	3.04 (3.04)	3.04 (3.04)	---	---	---	6.08	1.00~6.08	1.80	0.20~1.80	8.3	1.0~8.3
5.0+6.0	3.02 (3.02)	3.93 (3.93)	---	---	---	6.95	1.00~6.95	1.80	0.21~1.80	8.3	1.0~8.3
5.0+7.1	2.73 (2.73)	4.22 (4.22)	---	---	---	6.95	1.00~6.95	1.80	0.21~1.80	8.3	1.0~8.3
6.0+6.0	3.90 (3.90)	3.90 (3.90)	---	---	---	7.79	1.00~7.79	1.80	0.21~1.80	8.3	1.0~8.3
6.0+7.1	3.57 (3.57)	4.22 (4.22)	---	---	---	7.79	1.00~7.79	1.80	0.21~1.80	8.3	1.0~8.3
7.1+7.1	3.90 (3.90)	3.90 (3.90)	---	---	---	7.79	1.00~7.79	1.80	0.21~1.80	8.3	1.0~8.3
2.5+2.5+2.5	2.22 (2.22)	2.22 (2.22)	2.22 (2.22)	---	---	6.66	1.20~6.66	1.80	0.26~1.80	8.3	1.2~8.3
2.5+2.5+3.5	1.96 (1.96)	1.96 (1.96)	2.75 (2.75)	---	---	6.67	1.20~6.67	1.80	0.26~1.80	8.3	1.2~8.3
2.5+2.5+5.0	1.74 (1.74)	1.74 (1.74)	3.21 (3.21)	---	---	6.70	1.20~6.70	1.80	0.25~1.80	8.3	1.2~8.3
2.5+2.5+6.0	1.71 (1.71)	1.71 (1.71)	4.11 (4.11)	---	---	7.54	1.20~7.54	1.80	0.25~1.80	8.3	1.2~8.3
2.5+2.5+7.1	1.56 (1.56)	1.56 (1.56)	4.42 (4.42)	---	---	7.54	1.20~7.54	1.80	0.25~1.80	8.3	1.2~8.3
2.5+3.5+3.5	1.76 (1.76)	2.46 (2.46)	2.46 (2.46)	---	---	6.68	1.20~6.68	1.80	0.26~1.80	8.3	1.2~8.3
2.5+3.5+5.0	1.58 (1.58)	2.21 (2.21)	2.91 (2.91)	---	---	6.70	1.20~6.70	1.80	0.25~1.80	8.3	1.2~8.3
2.5+3.5+6.0	1.57 (1.57)	2.20 (2.20)	3.78 (3.78)	---	---	7.55	1.20~7.55	1.80	0.25~1.80	8.3	1.2~8.3
2.5+3.5+7.1	1.44 (1.44)	2.02 (2.02)	4.09 (4.09)	---	---	7.55	1.20~7.55	1.80	0.25~1.80	8.3	1.2~8.3
2.5+5.0+5.0	1.44 (1.44)	2.65 (2.65)	2.65 (2.65)	---	---	6.73	1.20~6.73	1.80	0.25~1.80	8.3	1.2~8.3
2.5+5.0+6.0	1.45 (1.45)	2.66 (2.66)	3.47 (3.47)	---	---	7.58	1.20~7.58	1.80	0.25~1.80	8.3	1.2~8.3
2.5+5.0+7.1	1.33 (1.33)	2.46 (2.46)	3.79 (3.79)	---	---	7.58	1.20~7.58	1.80	0.25~1.80	8.3	1.2~8.3
2.5+6.0+6.0	1.45 (1.45)	3.48 (3.48)	3.48 (3.48)	---	---	8.40	1.20~8.40	1.80	0.23~1.80	8.3	1.1~8.3
2.5+6.0+7.1	1.35 (1.35)	3.23 (3.23)	3.82 (3.82)	---	---	8.40	1.20~8.40	1.80	0.23~1.80	8.3	1.1~8.3
3.5+3.5+3.5	2.23 (2.23)	2.23 (2.23)	2.23 (2.23)	---	---	6.68	1.20~6.68	1.80	0.26~1.80	8.3	1.2~8.3
3.5+3.5+5.0	2.02 (2.02)	2.02 (2.02)	2.66 (2.66)	---	---	6.71	1.20~6.71	1.80	0.25~1.80	8.3	1.2~8.3
3.5+3.5+6.0	2.04 (2.04)	2.04 (2.04)	3.49 (3.49)	---	---	7.56	1.20~7.56	1.80	0.25~1.80	8.3	1.2~8.3
3.5+3.5+7.1	1.88 (1.88)	1.88 (1.88)	3.81 (3.81)	---	---	7.56	1.20~7.56	1.80	0.25~1.80	8.3	1.2~8.3
3.5+5.0+5.0	1.86 (1.86)	2.44 (2.44)	2.44 (2.44)	---	---	6.74	1.20~6.74	1.80	0.25~1.80	8.3	1.2~8.3
3.5+5.0+6.0	1.88 (1.88)	2.48 (2.48)	3.23 (3.23)	---	---	7.59	1.20~7.59	1.80	0.25~1.80	8.3	1.2~8.3
3.5+5.0+7.1	1.75 (1.75)	2.30 (2.30)	3.55 (3.55)	---	---	7.59	1.20~7.59	1.80	0.25~1.80	8.3	1.2~8.3
3.5+6.0+6.0	1.90 (1.90)	3.26 (3.26)	3.26 (3.26)	---	---	8.41	1.20~8.41	1.80	0.23~1.80	8.3	1.1~8.3
5.0+5.0+5.0	2.30 (2.30)	2.30 (2.30)	2.30 (2.30)	---	---	6.91	1.20~6.91	1.85	0.25~1.85	8.5	1.2~8.5
5.0+5.0+6.0	2.35 (2.35)	2.35 (2.35)	3.07 (3.07)	---	---	7.77	1.20~7.77	1.85	0.25~1.85	8.5	1.2~8.5
2.5+2.5+2.5+2.5	1.83 (1.83)	1.83 (1.83)	1.83 (1.83)	1.83 (1.83)	---	7.30	1.60~7.30	1.80	0.34~1.80	8.3	1.6~8.3
2.5+2.5+2.5+3.5	1.66 (1.66)	1.66 (1.66)	1.66 (1.66)	2.33 (2.33)	---	7.31	1.60~7.31	1.80	0.34~1.80	8.3	1.6~8.3
2.5+2.5+2.5+5.0	1.51 (1.51)	1.51 (1.51)	1.51 (1.51)	2.79 (2.79)	---	7.33	1.60~7.33	1.80	0.33~1.80	8.3	1.6~8.3
2.5+2.5+2.5+6.0	1.51 (1.51)	1.51 (1.51)	1.51 (1.51)	3.63 (3.63)	---	8.16	1.60~8.16	1.80	0.31~1.80	8.3	1.5~8.3
2.5+2.5+2.5+7.1	1.40 (1.40)	1.40 (1.40)	1.40 (1.40)	3.97 (3.97)	---	8.16	1.60~8.16	1.80	0.31~1.80	8.3	1.5~8.3
2.5+2.5+3.5+3.5	1.52 (1.52)	1.52 (1.52)	2.13 (2.13)	2.13 (2.13)	---	7.31	1.60~7.31	1.80	0.34~1.80	8.3	1.6~8.3
2.5+2.5+3.5+5.0	1.40 (1.40)	1.40 (1.40)	1.96 (1.96)	2.58 (2.58)	---	7.34	1.60~7.34	1.80	0.33~1.80	8.3	1.6~8.3
2.5+2.5+3.5+6.0	1.41 (1.41)	1.41 (1.41)	1.97 (1.97)	3.38 (3.38)	---	8.17	1.60~8.17	1.80	0.31~1.80	8.3	1.5~8.3
2.5+2.5+3.5+7.1	1.31 (1.31)	1.31 (1.31)	1.83 (1.83)	3.72 (3.72)	---	8.17	1.60~8.17	1.80	0.31~1.80	8.3	1.5~8.3
2.5+2.5+5.0+5.0	1.32 (1.32)	1.32 (1.32)	2.44 (2.44)	2.44 (2.44)	---	7.52	1.60~7.52	1.85	0.33~1.85	8.5	1.6~8.5
2.5+2.5+5.0+6.0	1.34 (1.34)	1.34 (1.34)	2.47 (2.47)	3.22 (3.22)	---	8.36	1.60~8.36	1.85	0.31~1.85	8.5	1.5~8.5
2.5+3.5+3.5+3.5	1.41 (1.41)	1.97 (1.97)	1.97 (1.97)	1.97 (1.97)	---	7.32	1.60~7.32	1.80	0.34~1.80	8.3	1.6~8.3
2.5+3.5+3.5+5.0	1.30 (1.30)	1.82 (1.82)	1.82 (1.82)	2.40 (2.40)	---	7.35	1.60~7.35	1.80	0.33~1.80	8.3	1.6~8.3
2.5+3.5+3.5+6.0	1.32 (1.32)	1.85 (1.85)	1.85 (1.85)	3.17 (3.17)	---	8.18	1.60~8.18	1.80	0.31~1.80	8.3	1.5~8.3
2.5+3.5+5.0+5.0	1.24 (1.24)	1.73 (1.73)	2.28 (2.28)	2.28 (2.28)	---	7.53	1.60~7.53	1.85	0.33~1.85	8.5	1.6~8.5
3.5+3.5+3.5+3.5	1.83 (1.83)	1.83 (1.83)	1.83 (1.83)	1.83 (1.83)	---	7.33	1.60~7.33	1.80	0.34~1.80	8.3	1.6~8.3
3.5+3.5+3.5+5.0	1.71 (1.71)	1.71 (1.71)	1.71 (1.71)	2.24 (2.24)	---	7.36	1.60~7.36	1.80	0.33~1.80	8.3	1.6~8.3
2.5+2.5+2.5+2.5+2.5	1.58 (1.58)	1.58 (1.58)	1.58 (1.58)	1.58 (1.58)	1.58 (1.58)	7.92	2.00~7.92	1.80	0.40~1.80	8.3	1.9~8.3
2.5+2.5+2.5+2.5+3.5	1.47 (1.47)	1.47 (1.47)	1.47 (1.47)	1.47 (1.47)	1.62 (2.06)	7.93	2.00~7.93	1.80	0.40~1.80	8.3	1.9~8.3
2.5+2.5+2.5+2.5+5.0	1.39 (1.39)	1.39 (1.39)	1.39 (1.39)	1.39 (1.39)	2.56 (2.56)	8.11	2.00~8.11	1.85	0.40~1.85	8.5	1.9~8.5
2.5+2.5+2.5+2.5+6.0	1.35 (1.40)	1.35 (1.40)	1.35 (1.40)	1.35 (1.40)	3.21 (3.35)	8.61	2.00~8.93	1.77	0.36~1.85	8.2	1.7~8.5
2.5+2.5+2.5+3.5+3.5	1.37 (1.37)	1.37 (1.37)	1.37 (1.37)	1.92 (1.92)	1.92 (1.92)	7.94	2.00~7.94	1.80	0.40~1.80	8.3	1.9~8.3
2.5+2.5+2.5+3.5+5.0	1.30 (1.30)	1.30 (1.30)	1.30 (1.30)	1.82 (1.82)	2.39 (2.39)	8.12	2.00~8.12	1.85	0.40~1.85	8.5	1.9~8.5
2.5+2.5+3.5+3.5+3.5	1.28 (1.28)	1.28 (1.28)	1.80 (1.80)	1.80 (1.80)	1.80 (1.80)	7.95	2.00~7.95	1.80	0.40~1.80	8.3	1.9~8.3



## OUTDOOR UNIT MKM100VVMG

Cooling [50Hz, 230V] [Input current limit : 11.0A]

COMBINATION OF INDOOR UNIT	CAPACITY OF EACH INDOOR UNIT										
	Each capacity at rated (max) capacity (kW)					Total capacity (kW)		Total input (kW)		Total current (A)	
	A room	B room	C room	D room	E room	Rating	(min - max)	Rating	(min - max)	Rating	(min - max)
2.5	2.50 (3.94)	---	---	---	---	2.50	0.80-3.94	0.60	0.19-1.05	2.8	0.9-4.9
3.5	3.50 (5.11)	---	---	---	---	3.50	0.80-5.11	0.94	0.19-1.24	4.4	0.9-5.7
5.0	5.00 (6.56)	---	---	---	---	5.00	0.80-6.56	1.62	0.18-1.82	7.5	0.9-8.4
6.0	6.00 (7.61)	---	---	---	---	6.00	0.80-7.61	1.68	0.18-2.35	7.7	0.9-10.8
7.1	7.10 (8.10)	---	---	---	---	7.10	0.80-8.10	2.22	0.18-2.35	10.2	0.9-10.8
2.5+2.5	2.50 (3.53)	2.50 (3.53)	---	---	---	5.00	1.00-7.06	1.36	0.21-2.34	6.3	1.0-10.8
2.5+3.5	2.50 (2.95)	3.50 (4.12)	---	---	---	6.00	1.00-7.07	1.79	0.21-2.35	8.2	1.0-10.8
2.5+5.0	2.50 (2.50)	4.60 (4.60)	---	---	---	7.10	1.00-7.10	2.36	0.20-2.36	10.9	1.0-10.9
2.5+6.0	2.39 (2.39)	5.75 (5.75)	---	---	---	8.14	1.00-8.14	2.37	0.22-2.37	10.9	1.1-10.9
2.5+7.1	2.12 (2.12)	6.02 (6.02)	---	---	---	8.14	1.00-8.14	2.37	0.22-2.37	10.9	1.1-10.9
3.5+3.5	3.50 (3.54)	3.50 (3.54)	---	---	---	7.00	1.00-7.08	2.28	0.21-2.35	10.5	1.0-10.8
3.5+5.0	3.07 (3.07)	4.04 (4.04)	---	---	---	7.11	1.00-7.11	2.36	0.20-2.36	10.9	1.0-10.9
3.5+6.0	3.00 (3.00)	5.15 (5.15)	---	---	---	8.15	1.00-8.15	2.37	0.22-2.37	10.9	1.1-10.9
3.5+7.1	2.69 (2.69)	5.46 (5.46)	---	---	---	8.15	1.00-8.15	2.37	0.22-2.37	10.9	1.1-10.9
5.0+5.0	3.58 (3.58)	3.58 (3.58)	---	---	---	7.15	1.00-7.15	2.37	0.20-2.37	10.9	1.0-10.9
5.0+6.0	3.55 (3.55)	4.63 (4.63)	---	---	---	8.18	1.00-8.18	2.37	0.21-2.37	10.9	1.0-10.9
5.0+7.1	3.22 (3.22)	4.96 (4.96)	---	---	---	8.18	1.00-8.18	2.37	0.21-2.37	10.9	1.0-10.9
6.0+6.0	4.25 (4.56)	4.25 (4.56)	---	---	---	8.50	1.00-9.12	2.11	0.21-2.37	9.7	1.0-10.9
6.0+7.1	3.89 (4.18)	4.61 (4.94)	---	---	---	8.50	1.00-9.12	2.11	0.21-2.37	9.7	1.0-10.9
7.1+7.1	4.25 (4.56)	4.25 (4.56)	---	---	---	8.50	1.00-9.12	2.11	0.21-2.37	9.7	1.0-10.9
2.5+2.5+2.5	2.50 (2.62)	2.50 (2.62)	2.50 (2.62)	---	---	7.50	1.20-7.85	2.23	0.26-2.36	10.3	1.2-10.9
2.5+2.5+3.5	2.31 (2.31)	2.31 (2.31)	3.24 (3.24)	---	---	7.86	1.20-7.86	2.36	0.26-2.36	10.9	1.2-10.9
2.5+2.5+5.0	2.05 (2.05)	2.05 (2.05)	3.78 (3.78)	---	---	7.89	1.20-7.89	2.37	0.25-2.37	10.9	1.2-10.9
2.5+2.5+6.0	1.93 (2.01)	1.93 (2.01)	4.64 (4.83)	---	---	8.50	1.20-8.86	2.24	0.25-2.37	10.3	1.2-10.9
2.5+2.5+7.1	1.76 (1.83)	1.76 (1.83)	4.99 (5.20)	---	---	8.50	1.20-8.86	2.24	0.25-2.37	10.3	1.2-10.9
2.5+3.5+3.5	2.07 (2.07)	2.90 (2.90)	2.90 (2.90)	---	---	7.87	1.20-7.87	2.36	0.26-2.36	10.9	1.2-10.9
2.5+3.5+5.0	1.86 (1.86)	2.61 (2.61)	3.43 (3.43)	---	---	7.90	1.20-7.90	2.37	0.25-2.37	10.9	1.2-10.9
2.5+3.5+6.0	1.77 (1.85)	2.48 (2.59)	4.25 (4.44)	---	---	8.50	1.20-8.87	2.24	0.25-2.37	10.3	1.2-10.9
2.5+3.5+7.1	1.62 (1.69)	2.27 (2.37)	4.61 (4.81)	---	---	8.50	1.20-8.87	2.24	0.25-2.37	10.3	1.2-10.9
2.5+5.0+5.0	1.69 (1.69)	3.12 (3.12)	3.12 (3.12)	---	---	7.93	1.20-7.93	2.37	0.25-2.37	10.9	1.2-10.9
2.5+5.0+6.0	1.62 (1.70)	2.98 (3.13)	3.89 (4.08)	---	---	8.50	1.20-8.90	2.24	0.25-2.37	10.3	1.2-10.9
2.5+5.0+7.1	1.50 (1.57)	2.75 (2.88)	4.25 (4.45)	---	---	8.50	1.20-8.90	2.24	0.25-2.37	10.3	1.2-10.9
2.5+6.0+6.0	1.47 (1.68)	3.52 (4.04)	3.52 (4.04)	---	---	8.50	1.20-9.76	1.86	0.23-2.37	8.6	1.1-10.9
2.5+6.0+7.1	1.36 (1.56)	3.27 (3.75)	3.87 (4.44)	---	---	8.50	1.20-9.76	1.86	0.23-2.37	8.6	1.1-10.9
3.5+3.5+3.5	2.63 (2.63)	2.63 (2.63)	2.63 (2.63)	---	---	7.88	1.20-7.88	2.36	0.26-2.36	10.9	1.2-10.9
3.5+3.5+5.0	2.39 (2.39)	2.39 (2.39)	3.14 (3.14)	---	---	7.91	1.20-7.91	2.37	0.25-2.37	10.9	1.2-10.9
3.5+3.5+6.0	2.29 (2.39)	2.29 (2.39)	3.92 (4.09)	---	---	8.50	1.20-8.87	2.24	0.25-2.37	10.3	1.2-10.9
3.5+3.5+7.1	2.11 (2.20)	2.11 (2.20)	4.28 (4.47)	---	---	8.50	1.20-8.87	2.24	0.25-2.37	10.3	1.2-10.9
3.5+5.0+5.0	2.19 (2.19)	2.88 (2.88)	2.88 (2.88)	---	---	7.94	1.20-7.94	2.37	0.25-2.37	10.9	1.2-10.9
3.5+5.0+6.0	2.11 (2.21)	2.77 (2.90)	3.62 (3.79)	---	---	8.50	1.20-8.90	2.24	0.25-2.37	10.3	1.2-10.9
3.5+5.0+7.1	1.96 (2.05)	2.57 (2.69)	3.97 (4.16)	---	---	8.50	1.20-8.90	2.24	0.25-2.37	10.3	1.2-10.9
3.5+6.0+6.0	1.92 (2.21)	3.29 (3.78)	3.29 (3.78)	---	---	8.50	1.20-9.77	1.86	0.23-2.37	8.6	1.1-10.9
5.0+5.0+5.0	2.66 (2.66)	2.66 (2.66)	2.66 (2.66)	---	---	7.97	1.20-7.97	2.36	0.25-2.36	10.9	1.2-10.9
5.0+5.0+6.0	2.57 (2.70)	2.57 (2.70)	3.36 (3.53)	---	---	8.50	1.20-8.93	2.16	0.25-2.36	9.9	1.2-10.9
2.5+2.5+2.5+2.5	2.04 (2.15)	2.04 (2.15)	2.04 (2.15)	2.04 (2.15)	---	8.17	1.60-8.58	2.17	0.34-2.37	10.0	1.6-10.9
2.5+2.5+2.5+3.5	1.86 (1.95)	1.86 (1.95)	1.86 (1.95)	2.60 (2.73)	---	8.17	1.60-8.59	2.17	0.34-2.37	10.0	1.6-10.9
2.5+2.5+2.5+5.0	1.69 (1.78)	1.69 (1.78)	1.69 (1.78)	3.11 (3.28)	---	8.17	1.60-8.62	2.17	0.33-2.37	10.0	1.6-10.9
2.5+2.5+2.5+6.0	1.57 (1.76)	1.57 (1.76)	1.57 (1.76)	3.78 (4.23)	---	8.50	1.60-9.52	1.98	0.31-2.37	9.1	1.5-10.9
2.5+2.5+2.5+7.1	1.46 (1.63)	1.46 (1.63)	1.46 (1.63)	4.13 (4.63)	---	8.50	1.60-9.52	1.98	0.31-2.37	9.1	1.5-10.9
2.5+2.5+3.5+3.5	1.70 (1.79)	1.70 (1.79)	2.38 (2.51)	2.38 (2.51)	---	8.17	1.60-8.60	2.17	0.34-2.37	10.0	1.6-10.9
2.5+2.5+3.5+5.0	1.56 (1.65)	1.56 (1.65)	2.18 (2.31)	2.87 (3.03)	---	8.17	1.60-8.63	2.17	0.33-2.37	10.0	1.6-10.9
2.5+2.5+3.5+6.0	1.47 (1.64)	1.47 (1.64)	2.05 (2.30)	3.52 (3.94)	---	8.50	1.60-9.53	1.98	0.31-2.37	9.1	1.5-10.9
2.5+2.5+3.5+7.1	1.36 (1.53)	1.36 (1.53)	1.91 (2.14)	3.87 (4.34)	---	8.50	1.60-9.53	1.98	0.31-2.37	9.1	1.5-10.9
2.5+2.5+5.0+5.0	1.44 (1.52)	1.44 (1.52)	2.65 (2.81)	2.65 (2.81)	---	8.17	1.60-8.66	2.17	0.33-2.36	10.0	1.6-10.9
2.5+2.5+5.0+6.0	1.36 (1.53)	1.36 (1.53)	2.51 (2.82)	3.27 (3.67)	---	8.50	1.60-9.55	1.91	0.31-2.36	8.8	1.5-10.9
2.5+3.5+3.5+3.5	1.57 (1.66)	2.20 (2.32)	2.20 (2.32)	2.20 (2.32)	---	8.17	1.60-8.61	2.17	0.34-2.37	10.0	1.6-10.9
2.5+3.5+3.5+5.0	1.45 (1.53)	2.03 (2.14)	2.03 (2.14)	2.67 (2.82)	---	8.17	1.60-8.64	2.17	0.33-2.37	10.0	1.6-10.9
2.5+3.5+3.5+6.0	1.37 (1.54)	1.92 (2.15)	1.92 (2.15)	3.29 (3.69)	---	8.50	1.60-9.54	1.92	0.31-2.37	8.8	1.5-10.9
2.5+3.5+5.0+5.0	1.34 (1.43)	1.88 (2.00)	2.47 (2.62)	2.47 (2.62)	---	8.17	1.60-8.67	2.17	0.33-2.36	10.0	1.6-10.9
3.5+3.5+3.5+3.5	2.04 (2.16)	2.04 (2.16)	2.04 (2.16)	2.04 (2.16)	---	8.17	1.60-8.62	2.17	0.34-2.37	10.0	1.6-10.9
3.5+3.5+3.5+5.0	1.89 (2.00)	1.89 (2.00)	1.89 (2.00)	2.49 (2.64)	---	8.17	1.60-8.65	2.17	0.33-2.37	10.0	1.6-10.9
2.5+2.5+2.5+2.5+2.5	1.64 (1.85)	1.64 (1.85)	1.64 (1.85)	1.64 (1.85)	1.64 (1.85)	8.20	2.00-9.27	1.90	0.40-2.37	8.7	1.9-10.9
2.5+2.5+2.5+2.5+3.5	1.52 (1.72)	1.52 (1.72)	1.52 (1.72)	1.52 (1.72)	2.13 (2.40)	8.20	2.00-9.27	1.90	0.40-2.37	8.7	1.9-10.9
2.5+2.5+2.5+2.5+5.0	1.44 (1.59)	1.44 (1.59)	1.44 (1.59)	1.44 (1.59)	2.65 (2.93)	8.40	2.00-9.30	1.96	0.40-2.37	9.0	1.9-10.9
2.5+2.5+2.5+2.5+6.0	1.35 (1.58)	1.35 (1.58)	1.35 (1.58)	1.35 (1.58)	3.21 (3.80)	8.61	2.00-10.13	1.77	0.36-2.36	8.2	1.7-10.9
2.5+2.5+2.5+3.5+3.5	1.41 (1.60)	1.41 (1.60)	1.41 (1.60)	1.98 (2.24)	1.98 (2.24)	8.20	2.00-9.28	1.90	0.40-2.37	8.7	1.9-10.9
2.5+2.5+2.5+3.5+5.0	1.35 (1.49)	1.35 (1.49)	1.35 (1.49)	1.88 (2.09)	2.48 (2.75)	8.40	2.00-9.31	1.96	0.40-2.37	9.0	1.9-10.9
2.5+2.5+3.5+3.5+3.5	1.32 (1.50)	1.32 (1.50)	1.85 (2.10)	1.85 (2.10)	1.85 (2.10)	8.20	2.00-9.29	1.90	0.40-2.37	8.7	1.9-10.9



## OPTIONS

### OUTDOOR UNIT

OPTION NAME	MKM50VVMG	MKM75/85VVMG	MKM100VVMG
Air direction adjustment grille	KPW937F4	KPW5G112	
Drain plug	KKP937A4		KKP945A4

### INDOOR UNIT

OPTION NAME	CTKM25/35/50VVMG	CTKM60/71VVMG	CDKM25/35/50/60VVMG	FDMF50/60/71VVMG
Remote control PC-board set	BRP067A42*	BRP980B42*	BRP072C42	---
Wiring adaptor for timer clock / remote controller (normal open pulse contact / normal open contact)**	KRP413BB1S		---	---
Interface adaptor for DIII-NET**	KRP928BB2S		---	---
Wireless LAN connecting adaptor**	BRP072C42*		BRP072C42	DTA116
Titanium apatite deodorizing filter (without frame)	KAF970A46		---	---
Dust collection Filter (PM 2.5 Filter) without frame	BAFP046A41*		---	---
Deodorizing Filter (Enzyme Blue) without frame	BAFP094A41		---	---
Remote controller loss prevention with the chain	KKF910A4		---	---
Anti-body Filter	✓	✓	✓	✓
Anti-mould & Bacteria Filter	✓	✓	✓	✓

\* Standard accessory.

\*\* Remote control PC-Board set is also required for each indoor unit



**Titanium apatite photocatalytic air-purifying filter**  
KAF970A46



**Remote controller loss prevention chain**  
KKF917A4



**Anti-body Filter Suppressing Virus Within 1 Minute**



**Anti-mould & Bacteria Filter For stopping growth of Mould & Bacteria**

### CONTROL SYSTEM

OPTION NAME	Wall-Mounted Type	Duct-Connected Type	
	CTKM25/35/50/60/71V	CDKM25/35/50/60VVMG	FDMF50/60/71V
D'Smart Home		SVMPPH1	

\*DTA116A51 adaptor card is required for FDMR50T which can be connected up to 16 fancoil units

### D'SMARTHOME WORKS ON WIFI, Z-WAVE AND MODBUS





## Singapore main office

### DAIKIN AIRCONDITIONING (SINGAPORE) PTE LTD

10 Ang Mo Kio Industrial Park 2, Singapore 569501

☎ 6583 8888 ✉ sales@daikin.com.sg

#### 🕒 Office Operating Hours

Monday to Friday: 8.30 am to 6.00 pm  
Sat, Sun & Public Holiday: Closed

#### 🕒 Showroom Opening Hours

Monday to Friday: 9.00 am to 6.00 pm  
Sat, Sun & Public Holiday: Closed



[www.daikin.com.sg](http://www.daikin.com.sg)

### CALL CENTER

(SPARE PART / SERVICE DEPARTMENT)

☎ 6311 8686

☎ 6349 7313

#### 🕒 Operating Hours

Monday to Friday: 9.00 am to 5.00 pm  
Saturday: 9.00 am to 12.00 pm  
Sun & Public Holiday: Closed

Find us on  [DAIKIN SINGAPORE](#) 

For more information: